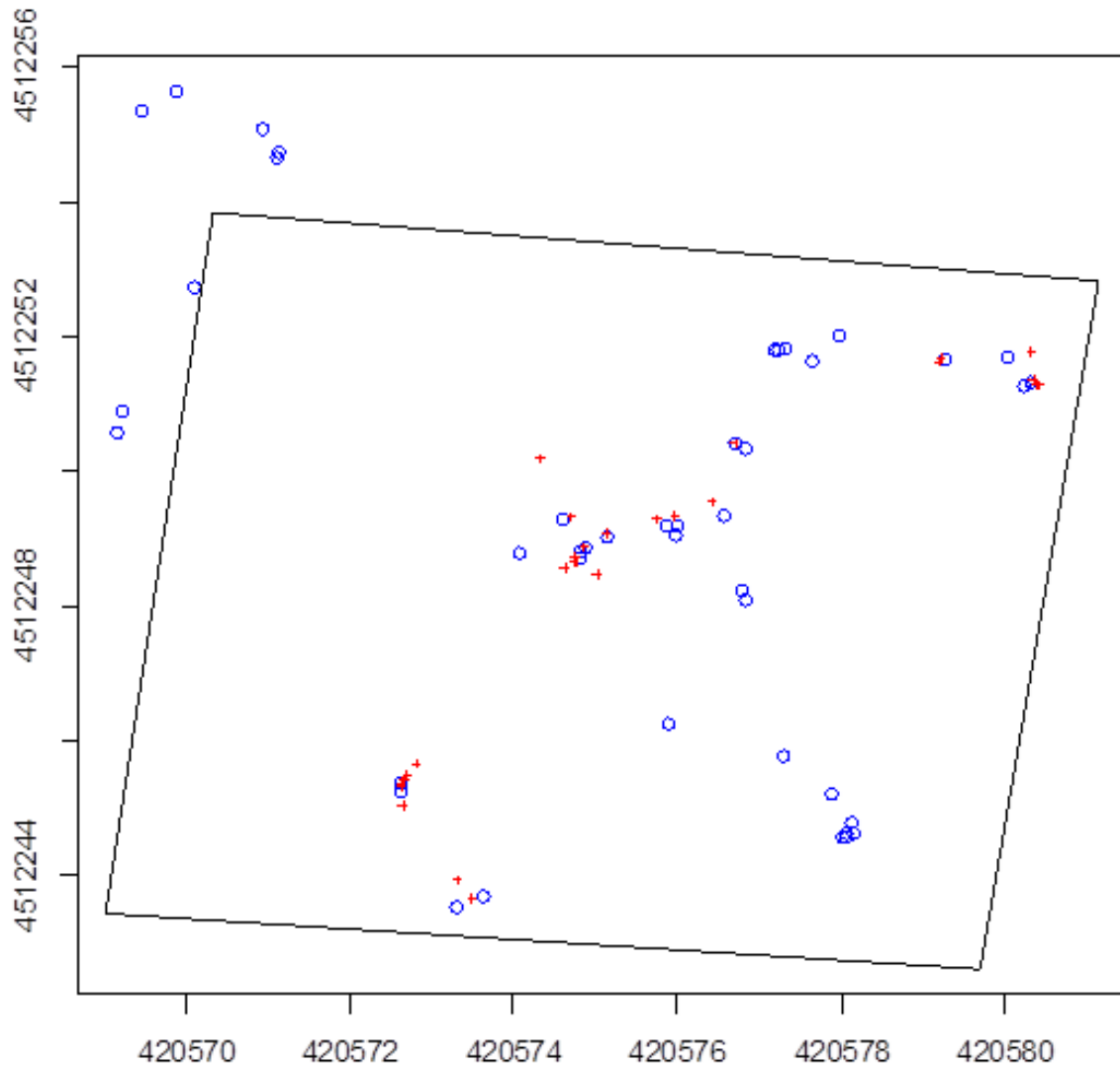
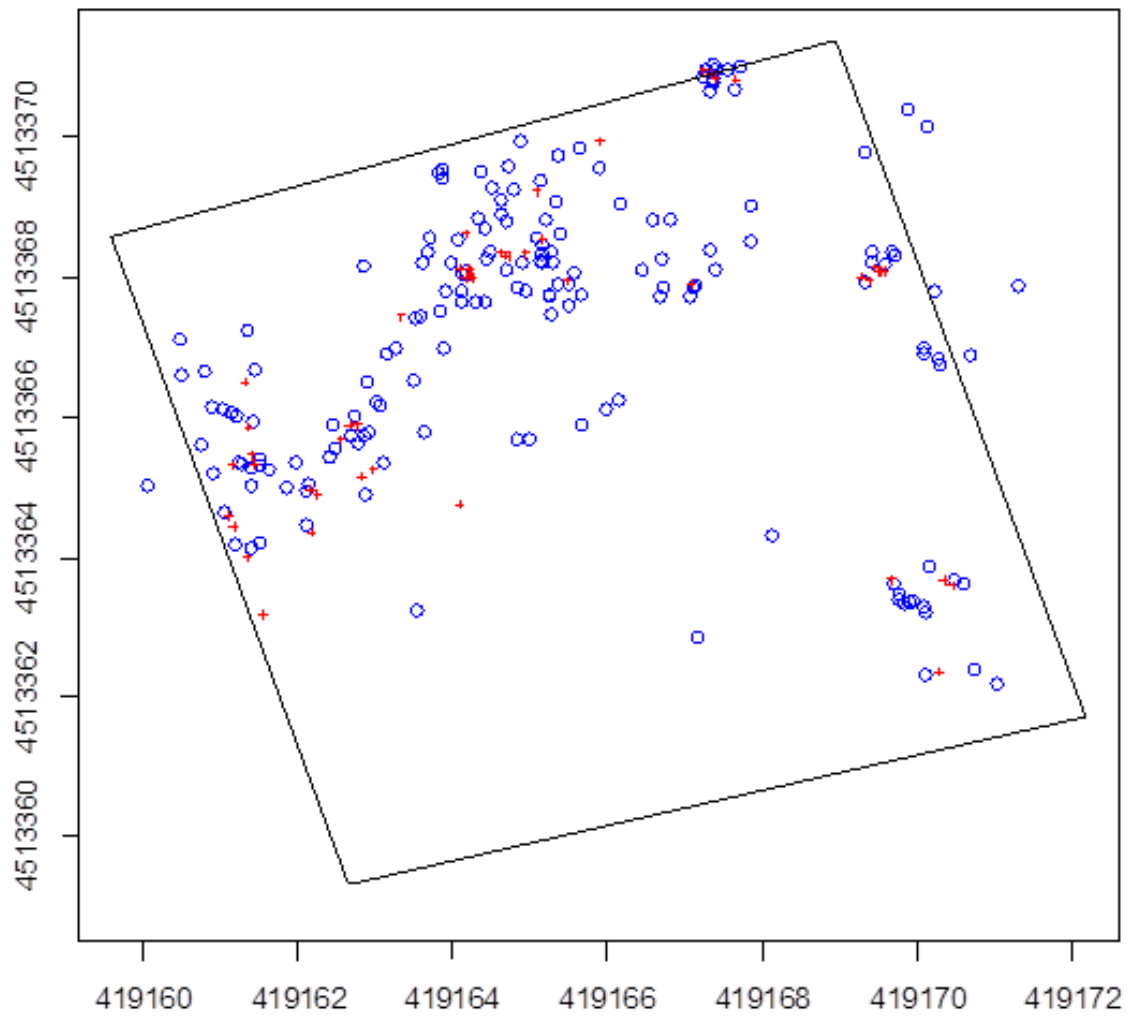


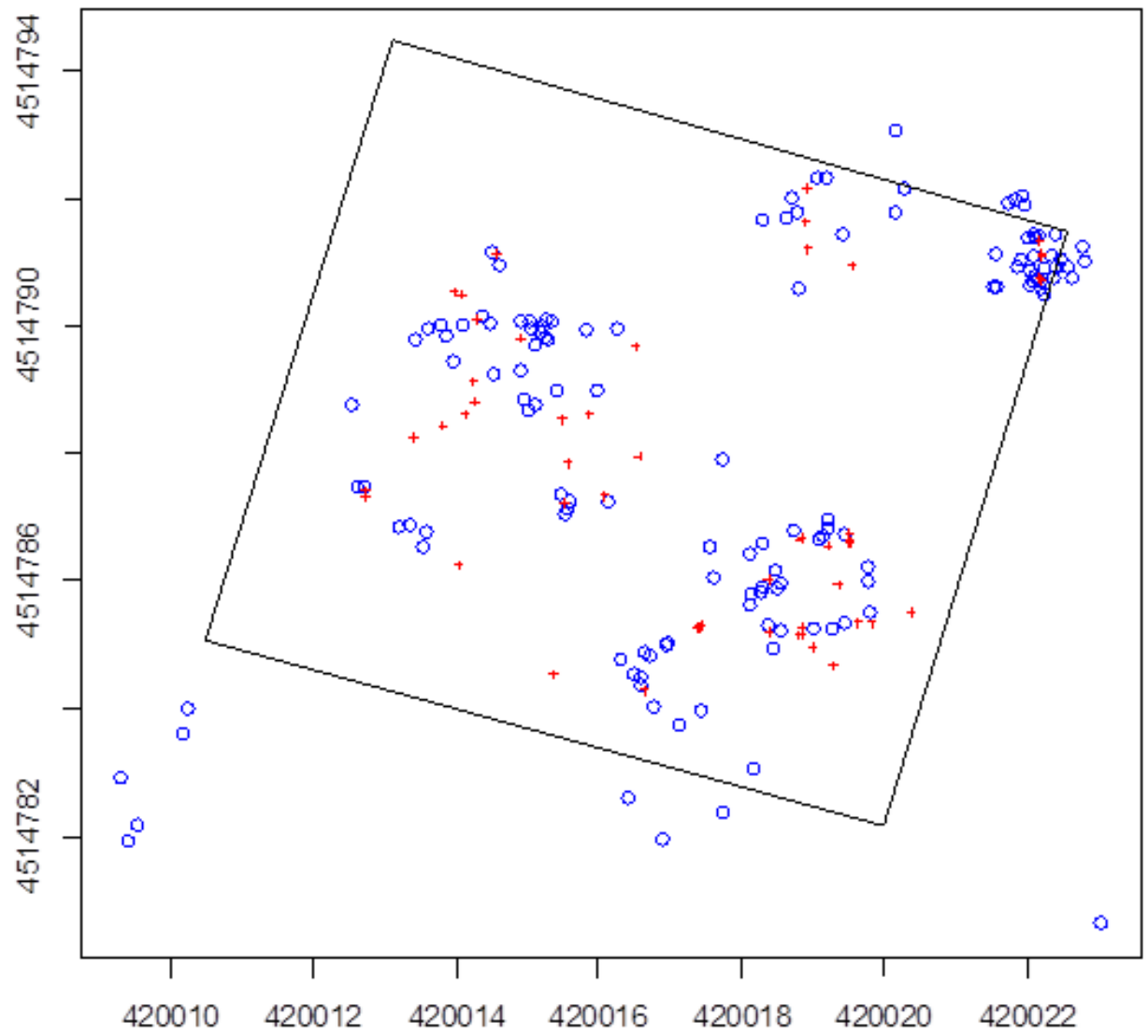
**Figure S1.** Spatial distribution of adults (circles) and seedlings (crosses) in each study plot of *A. caespitosa* and *S. ciliata*.



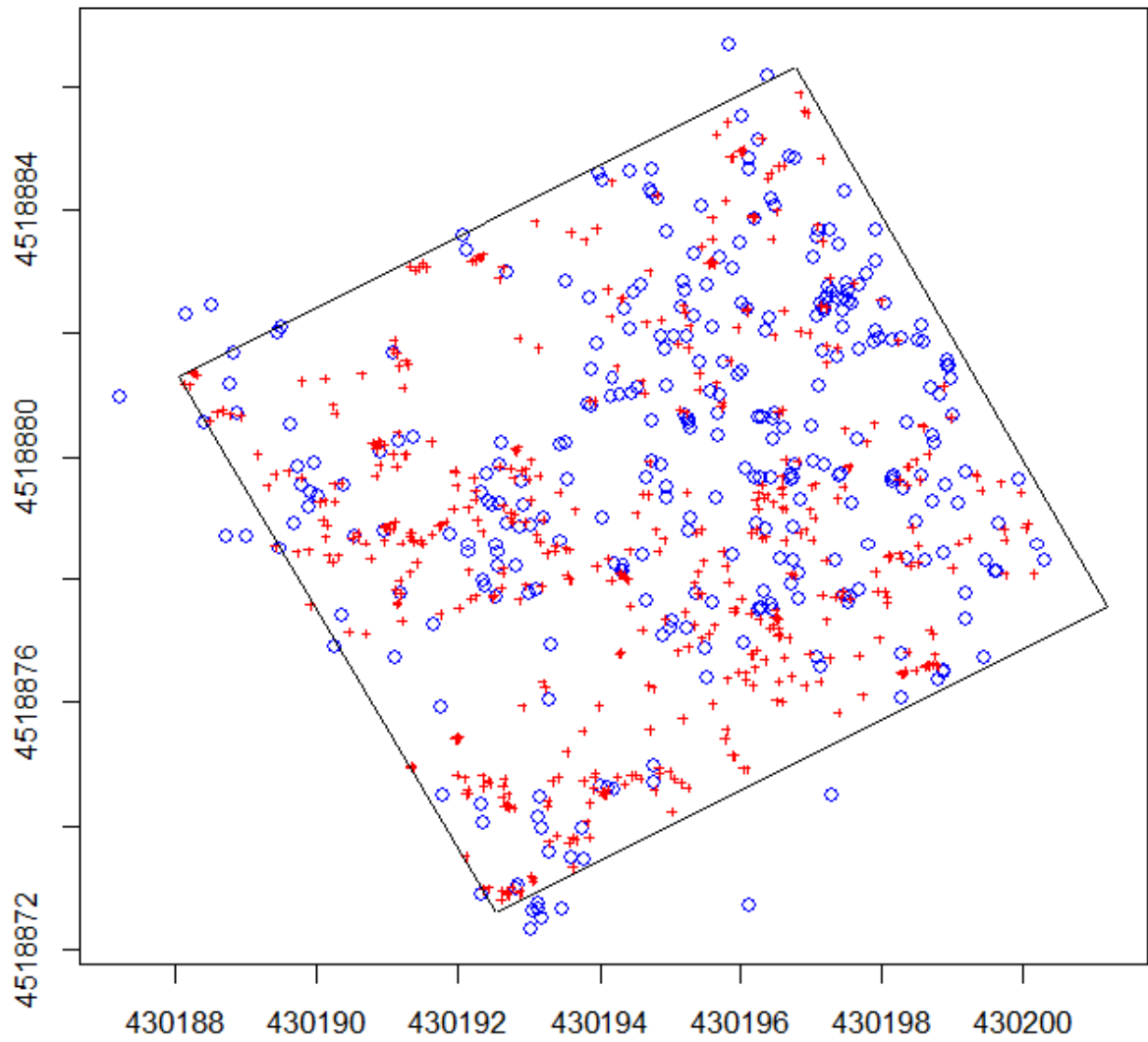
**Figure S1. (A)** Spatial distribution of adults (circles) and seedlings (crosses) in the Sierra de los Porrones population of *Armeria caespitosa*. Axes show UTM coordinates in meters.



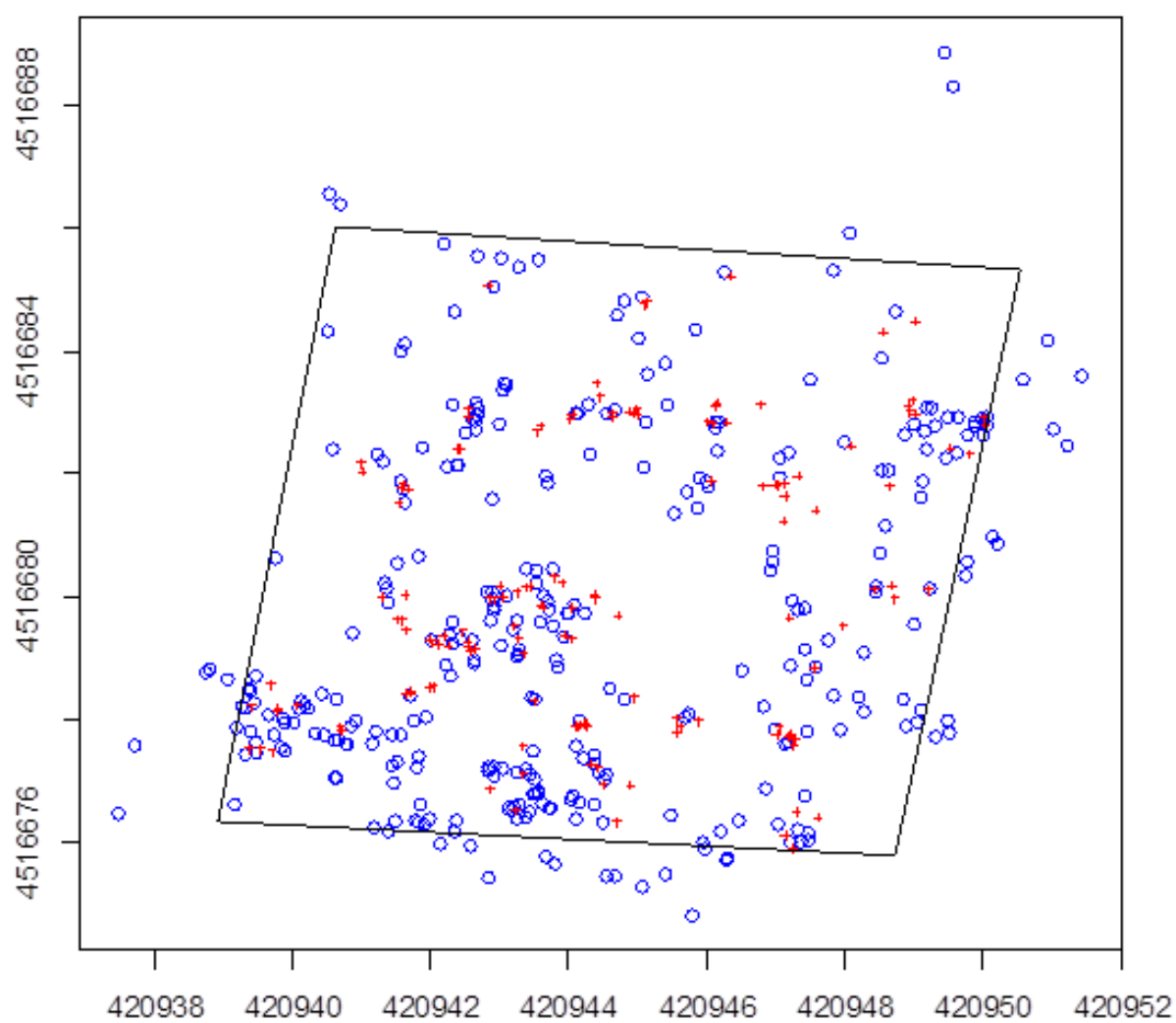
**Figure S1. (B)** Spatial distribution of adults (circles) and seedlings (crosses) in the Collado de las Vacas population of *Armeria caespitosa*. Axes show UTM coordinates in meters.



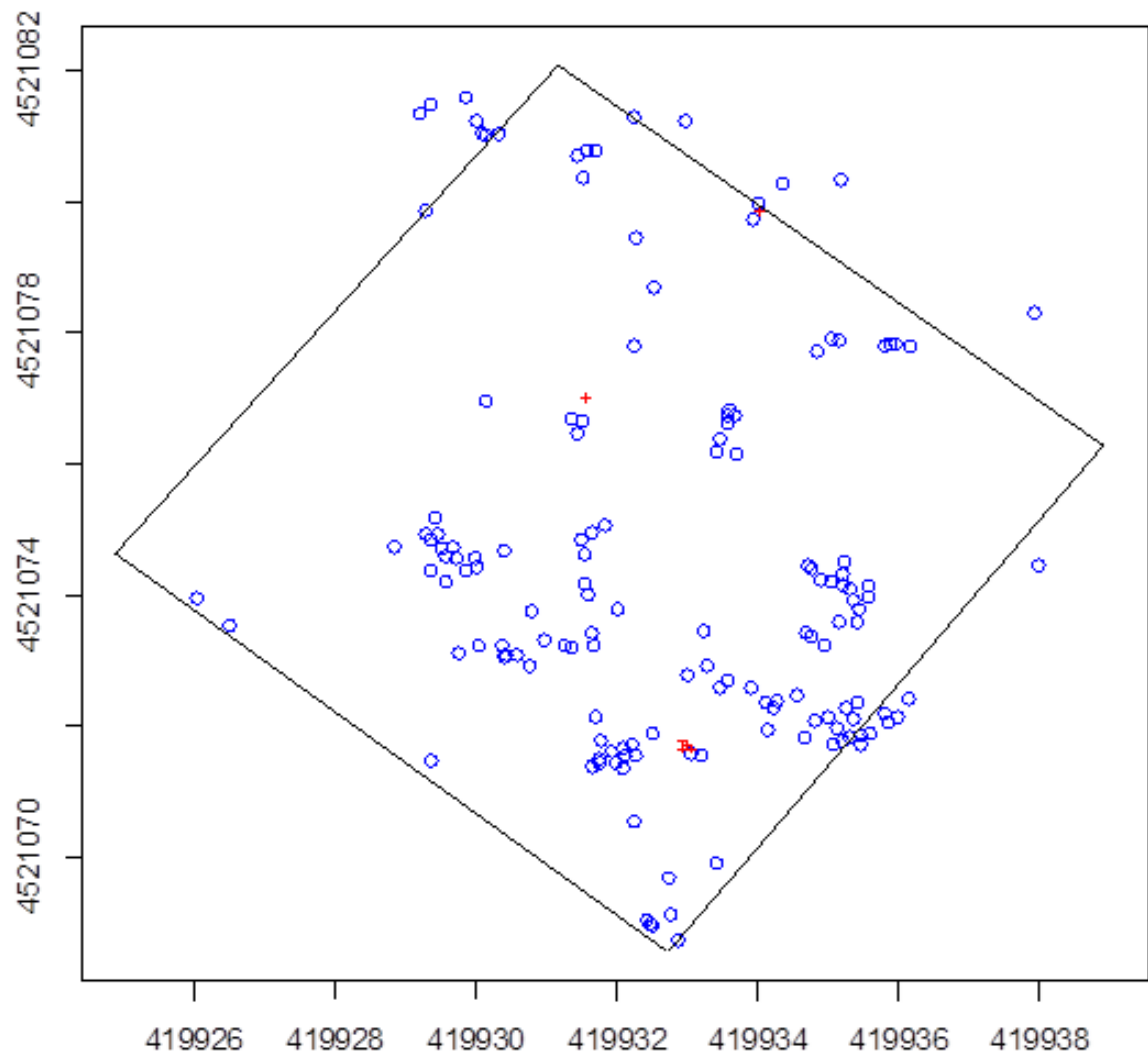
**Figure S1. (C)** Spatial distribution of adults (circles) and seedlings (crosses) in the Loma de Cabezas population of *Armeria caespitosa*. Axes show UTM coordinates in meters.



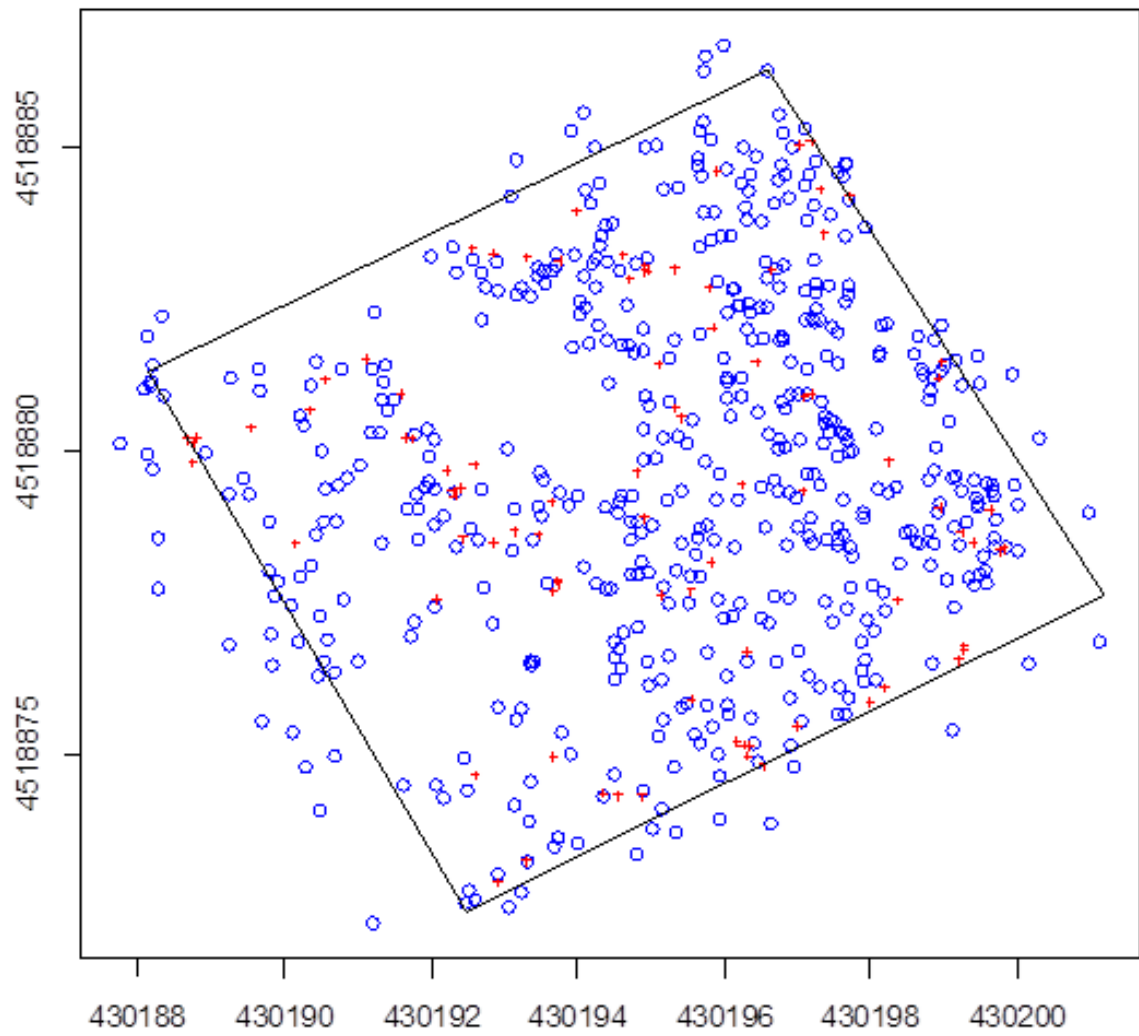
**Figure S1. (D)** Spatial distribution of adults (circles) and seedlings (crosses) in the Najarra population of *Armeria caespitosa*. Axes show UTM coordinates in meters.



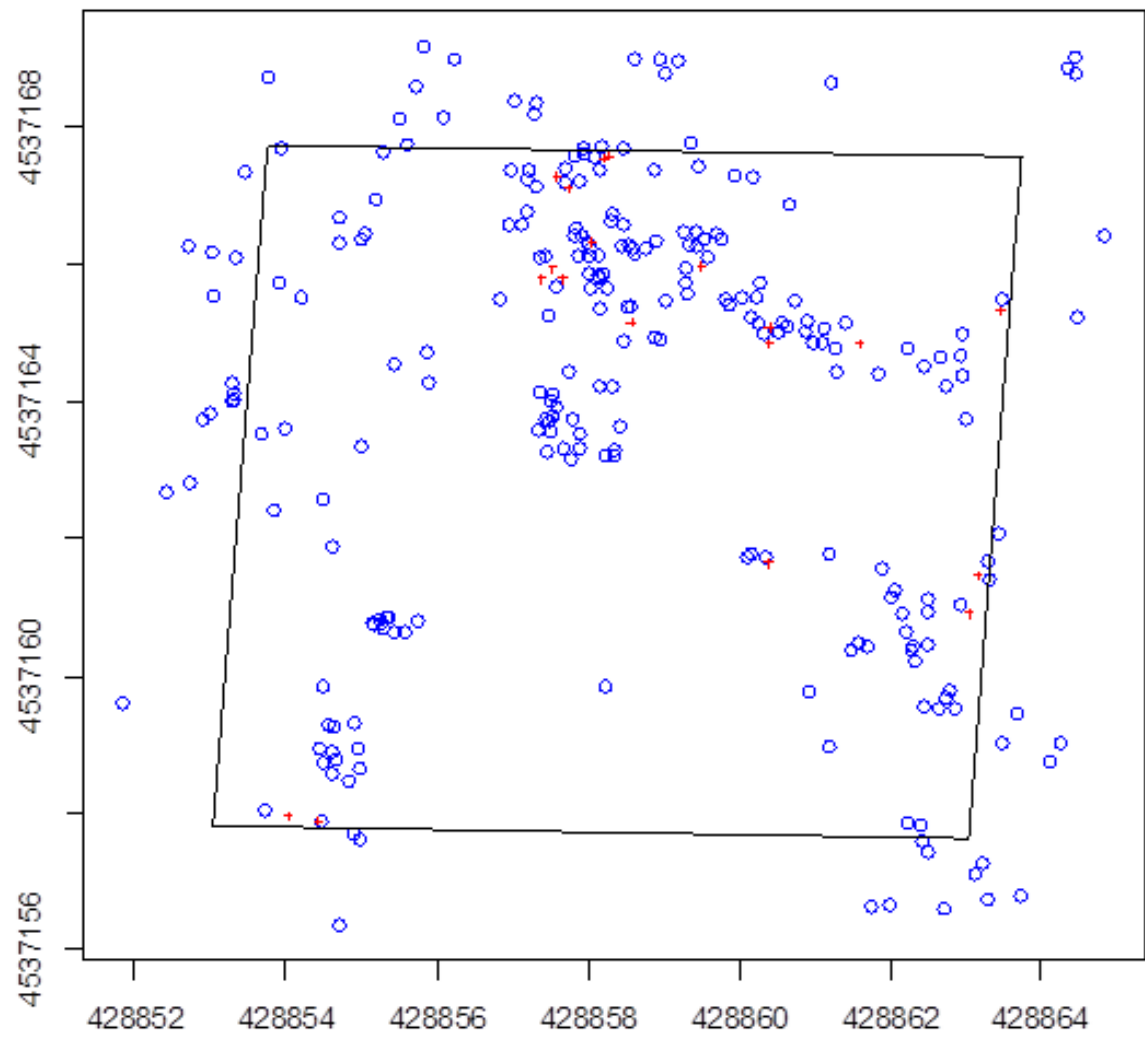
**Figure S1. (E)** Spatial distribution of adults (circles) and seedlings (crosses) in the Cabezas de Hierro population of *Armeria caespitosa*. Axes show UTM coordinates in meters.



**Figure S1. (F)** Spatial distribution of adults (circles) and seedlings (crosses) in the Cabezas de Hierro population of *Silene ciliata*. Axes show UTM coordinates in meters.

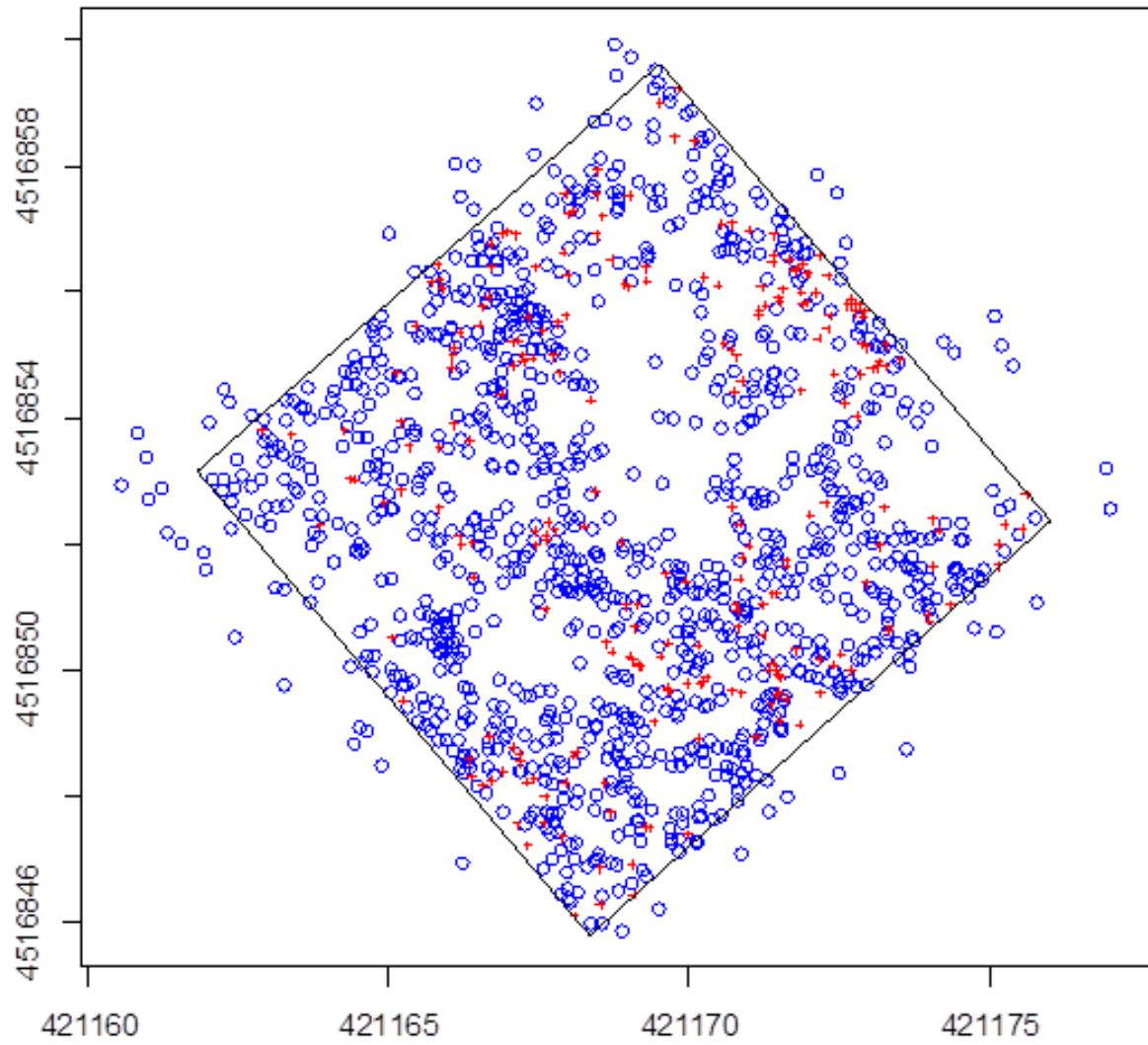


**Figure S1. (G)** Spatial distribution of adults (circles) and seedlings (crosses) in the Najarra population of *Silene ciliata*. Axes show UTM coordinates in meters.

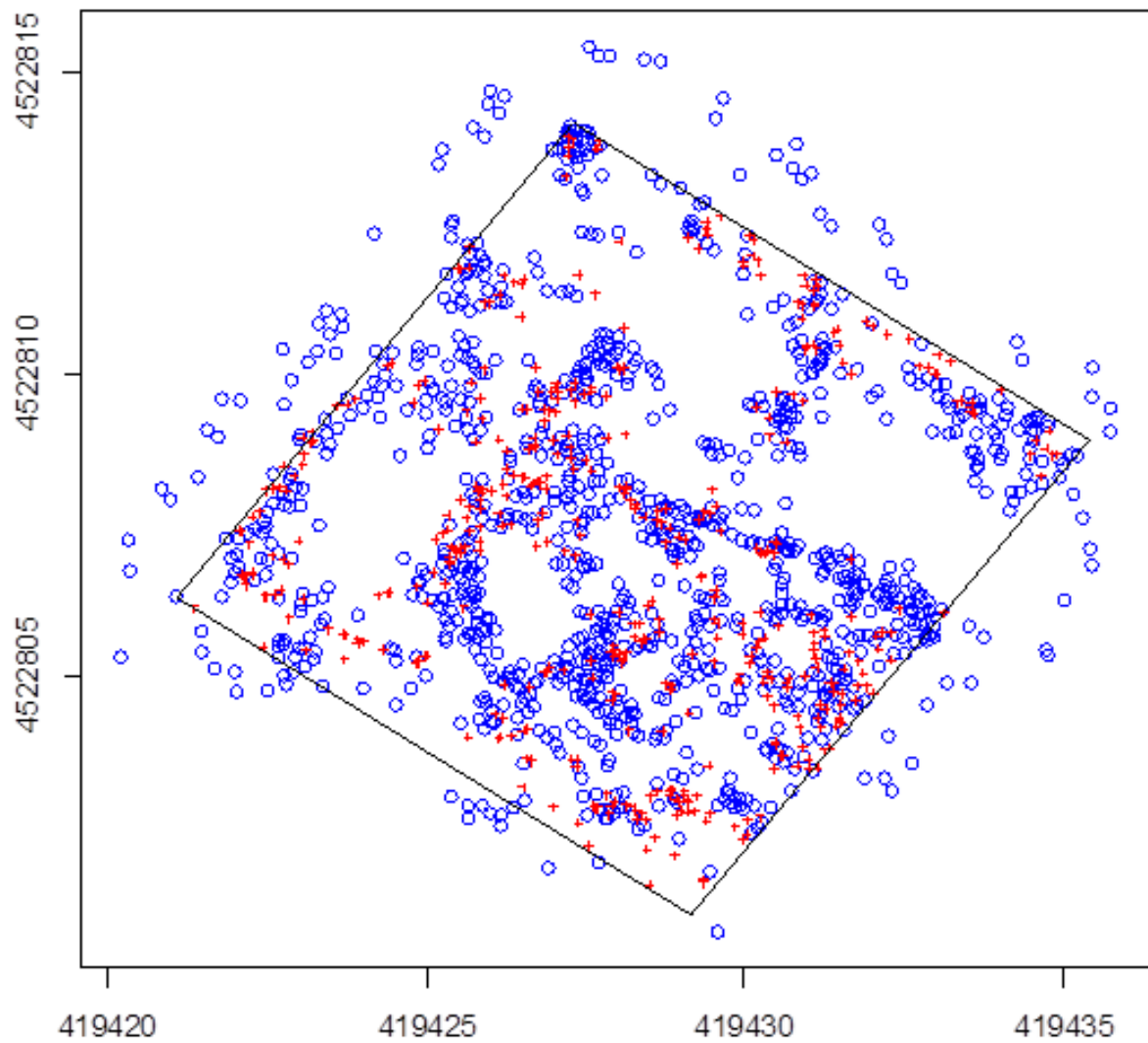


**Figure S1. (H)** Spatial distribution of adults (circles) and seedlings (crosses) in the Nevero population of *Silene ciliata*. Axes show UTM coordinates in meters.





**Figure S1. (I)** Spatial distribution of adults (circles) and seedlings (crosses) in the Cabezas de Hierro population of *Silene ciliata*. Axes show UTM coordinates in meters.



**Figure S1. (J)** Spatial distribution of adults (circles) and seedlings (crosses) in the Peñalara population of *Silene ciliata*. Axes show UTM coordinates in meters.