

Supplemental Figure 3. Amino acid alignments of scallop circadian clock genes to known homologs. Circadian clock gene sequences from the *Placopecten magellanicus* adult eye transcriptome were translated and aligned to known homologs from *Drosophila*, mouse, or *Crassostrea gigas*. Alignments were completed and exported from Geneious v. 5.6 (www.geneious.com). The graph above the alignment represents mean pairwise identity of each residue pair in each column, with green bars representing identical residues and missing bars highlighting areas where the sequence is different. End gaps in the alignments have solid green bars. Amino acids are shaded based on similarity, with black representing identical residues between the two sequences, grey representing similar residues, and white representing dissimilar residues. *A=clock*, *B=cryptochrome*, *C=cycle*, *D=doubletime*, *E=period*, *F=timeless*.

2. g11982t00001-clock

B

Identity

1. *Drosophila* cryptochrome

2. q16684t00001-cryptochrome

Identity

1. *Drosophila* cryptochrome

2. q16684t00001-cryptochrome

Identity

1. Drosophila cryptochrome

2. q16684t00001-cryptochrome

Identity

1. *Drosophila* cryptochrome

2. g16684t00001-cryptochrome

Identity

1. Drosophila cryptochrome

2. g16684t00001-cryptochrome

C

Identity

1. *Drosophila* cycle

2. g15986t00001-cycle

Identity

1. *Drosophila* cycle

2. g15986t00001-cycle

Identity

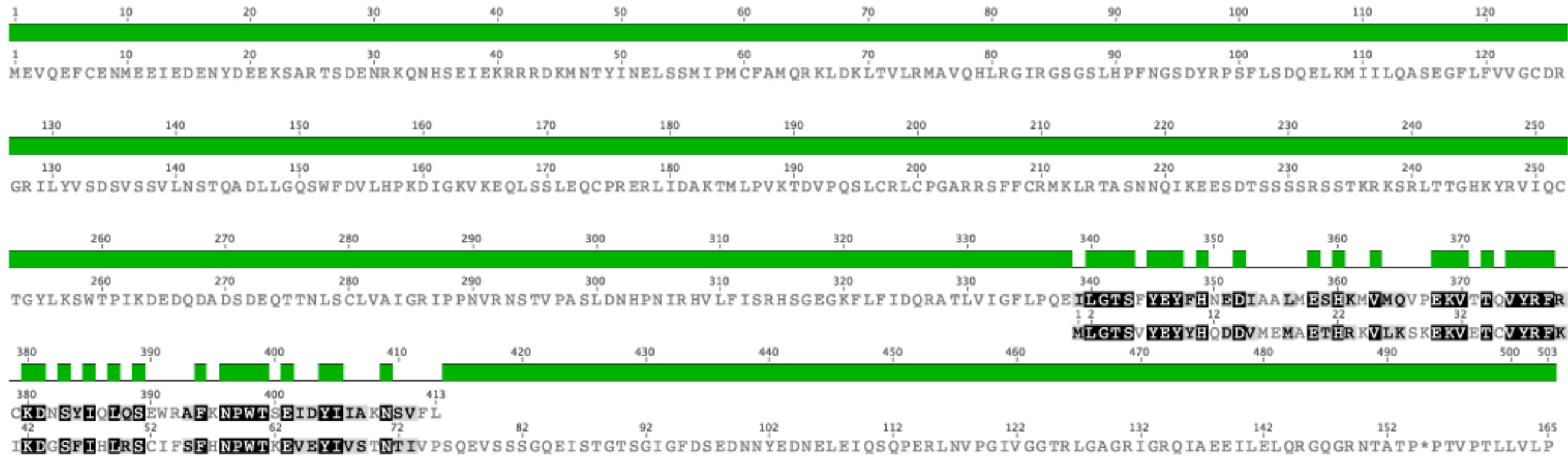
1. *Drosophila* cycle

2. g15986t00001-cycle

Identity

1. *Drosophila* cycle

2. g15986t00001-cycle



D

Identity

1. Drosophila discs overgrown, doubletime

2. g02789t00002-discs overgrown/doubletime

Identity

1. Drosophila discs overgrown, doubletime

2. g02789t00002-discs overgrown/doubletime

Identity

1. Drosophila discs overgrown, doubletime

2. g02789t00002-discs overgrown/doubletime

Identity

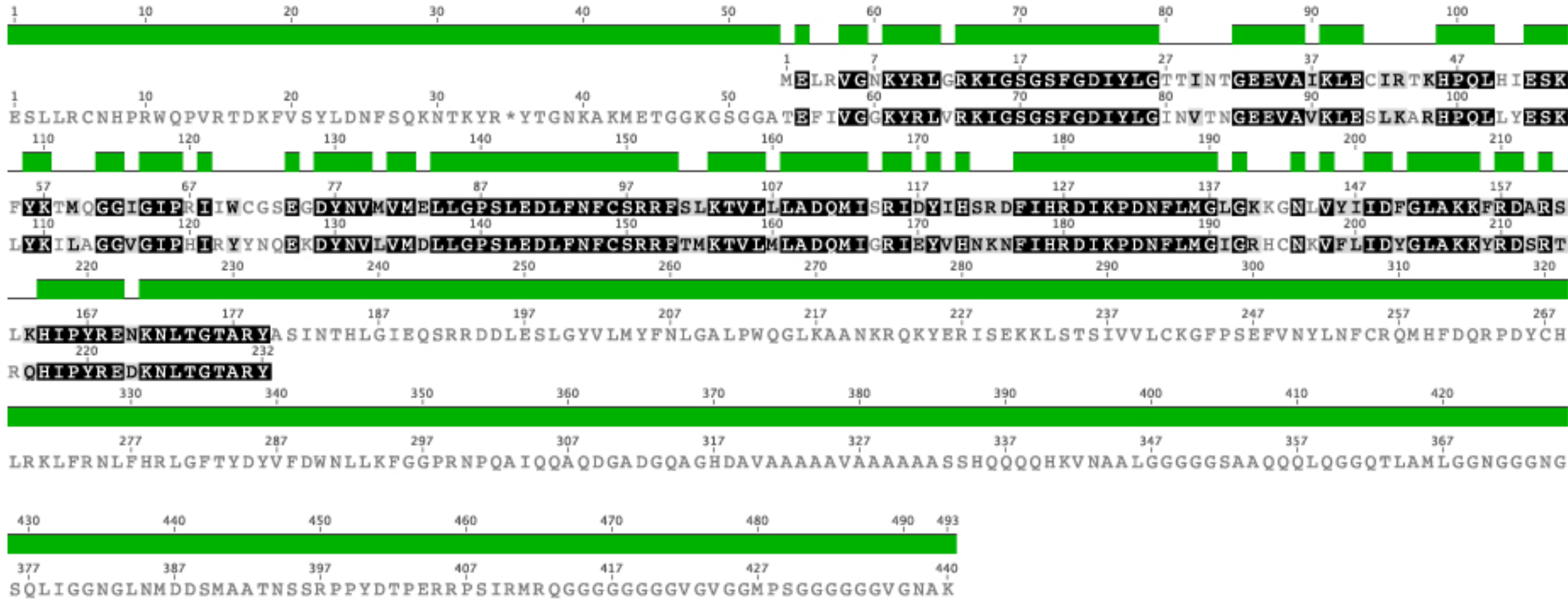
1. Drosophila discs overgrown, doubletime

2. g02789t00002-discs overgrown/doubletime

Identity

1. Drosophila discs overgrown, doubletime

2. g02789t00002-discs overgrown/doubletime



E

Identity	<div><div></div><div>110120</div></div>
1. Crassostrea gigas period	<div><div></div><div>1310011323</div></div>
2. g16999t00001-period	<div><div></div><div>1100109119</div></div>
Identity	<div><div></div><div>130140150160170180190200210220230240</div></div>
1. Crassostrea gigas period	<div><div></div><div>3343495969798696106116126136</div></div>
2. g16999t00001-period	<div><div></div><div>128138148158168178188198208218228238</div></div>
Identity	<div><div></div><div>250260270280290300310320330340350360</div></div>
1. Crassostrea gigas period	<div><div></div><div>146156166176183193202212222232242252</div></div>
2. g16999t00001-period	<div><div></div><div>248258268278288298309</div></div>
Identity	<div><div></div><div>370380390400410420430440450460470480</div></div>
1. Crassostrea gigas period	<div><div></div><div>262272282292302312322332342352362372</div></div>
2. g16999t00001-period	<div><div></div><div></div></div>
Identity	<div><div></div><div>490500510520530540550560570580590600610</div></div>
1. Crassostrea gigas period	<div><div></div><div>382392402412422432442452462472482492502</div></div>
2. g16999t00001-period	<div><div></div><div></div></div>
Identity	<div><div></div><div>620630640650660670680690700710720730</div></div>
1. Crassostrea gigas period	<div><div></div><div>512522532542552562572582592602612622</div></div>
2. g16999t00001-period	<div><div></div><div></div></div>
Identity	<div><div></div><div>740750760770780790800810820830840850</div></div>
1. Crassostrea gigas period	<div><div></div><div>632642652662672682692702712722732742</div></div>
2. g16999t00001-period	<div><div></div><div></div></div>
Identity	<div><div></div><div>860870880890900910920930940950960970</div></div>
1. Crassostrea gigas period	<div><div></div><div>752762772782792802812822832842852862</div></div>
2. g16999t00001-period	<div><div></div><div></div></div>
Identity	<div><div></div><div>9809901,0001,0101,0201,0301,0401,0501,0601,0701,0801,090</div></div>
1. Crassostrea gigas period	<div><div></div><div>87288289290291292293294295296297298299</div></div>
2. g16999t00001-period	<div><div></div><div></div></div>
Identity	<div><div></div><div>1,1001,1101,1201,1301,1401,1501,1601,1701,1801,1901,2001,2101,220</div></div>
1. Crassostrea gigas period	<div><div></div><div>9921,0021,0121,0221,0321,0421,0521,0621,0721,0821,0921,1021,112</div></div>
2. g16999t00001-period	<div><div></div><div></div></div>
Identity	<div><div></div><div>1,2301,2401,2501,2601,2701,2801,2901,3001,3101,3201,3301,340</div></div>
1. Crassostrea gigas period	<div><div></div><div>1,1221,1321,1421,1521,1621,1721,1821,1921,2021,2121,2221,232</div></div>
2. g16999t00001-period	<div><div></div><div></div></div>
Identity	<div><div></div><div>1,3501,3601,3701,3801,3901,4001,4101,4201,4301,4401,4501,453</div></div>
1. Crassostrea gigas period	<div><div></div><div>1,2421,2521,2621,2721,2821,2921,3021,3121,3221,3321,345</div></div>
2. g16999t00001-period	<div><div></div><div></div></div>

F

