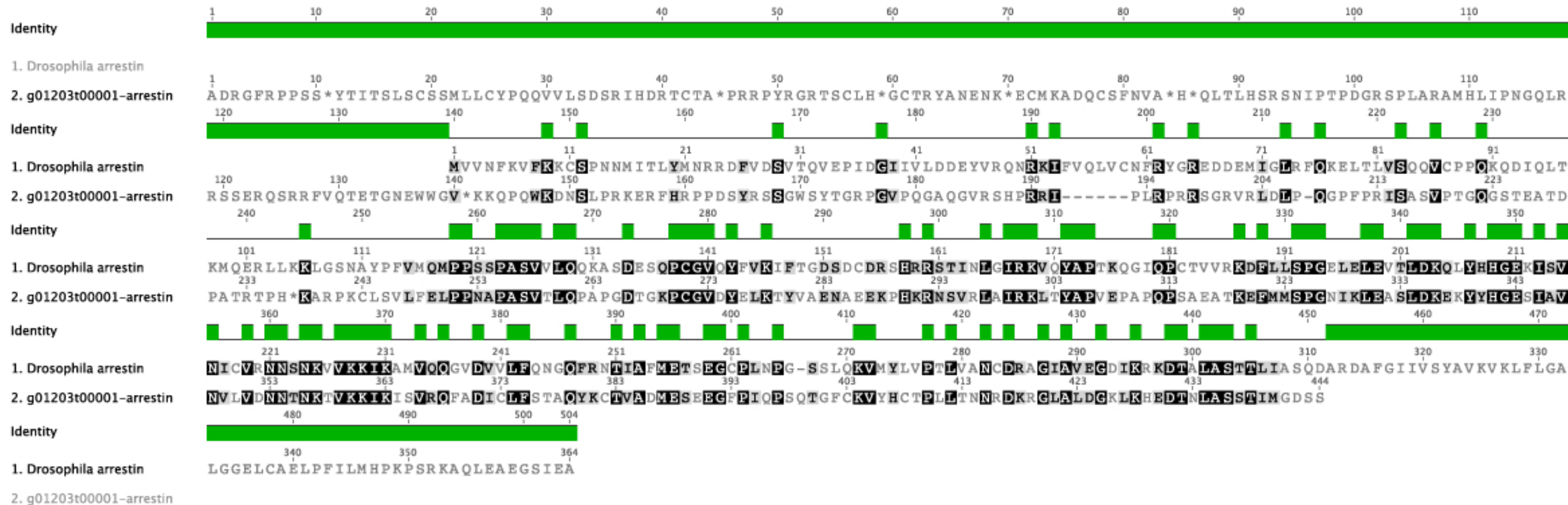


Supplemental Figure 2. Amino acid alignments of scallop Gi-protein coupled phototransduction genes to known homologs. Phototransduction gene sequences from the *Placopecten magellanicus* adult eye transcriptome were translated and aligned to known homologs from *Drosophila*, human, or rat. Alignments were completed and exported from Geneious v. 5.6 (www.geneious.com). The graph above the alignment represents mean pairwise identity of each residue pair in each column, with green bars representing identical residues and missing bars highlighting areas where the sequence is different. End gaps in the alignments have solid green bars. Amino acids are shaded based on similarity, with black representing identical residues between the two sequences, grey representing similar residues, and white representing dissimilar residues. *A=arrestin*, *B=cGMP gated channel alpha*, *C=cGMP gated channel beta*, *D=Go-protein alpha subunit*, *E=Gt-protein alpha subunit*, *F=G-protein beta subunit*, *G=G-protein gamma subunit*, *H=opsin*, *I=PDE alpha*, *J=PDE beta*, *K=protein kinase A*, *L=rhodopsin kinase*.

A



B

Identity

1. g02037t00001-cGMP gated channel alpha subunit

2. Human cGMP gated channel alpha subunit

Identity

1. g02037t00001-cGMP gated channel alpha subunit

2. Human cGMP gated channel alpha subunit

Identity

1. q02037t00001-cGMP gated channel alpha subunit

2. Human cGMP gated channel alpha subunit

Identity

1. g02037t00001-cGMP gated channel alpha subunit

2. Human cGMP gated channel alpha subunit

Identity

1. g02037t00001-cGMP gated channel alpha subunit

2. Human cGMP gated channel alpha subunit

Identity

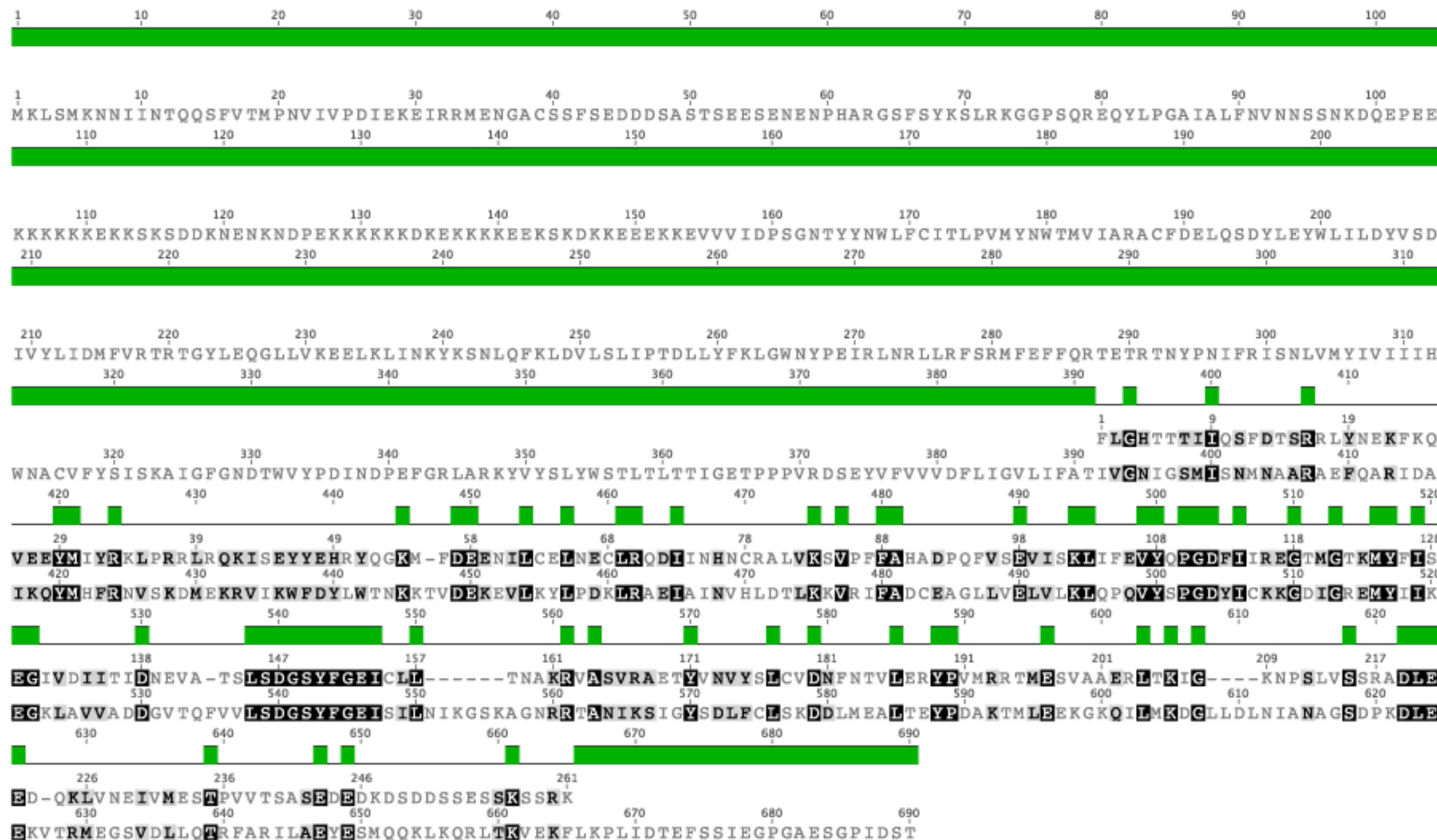
1. q02037t00001-cGMP gated channel alpha subunit

2. Human cGMP gated channel alpha subunit

Identity

1. g02037t00001-cGMP gated channel alpha subunit

2. Human cGMP gated channel alpha subunit



C

Identity

1. g02037t00002-cGMP gated channel beta subunit

2. Human cGMP gated channel beta subunit

Identity

1. g02037t00002-cGMP gated channel beta subunit

2. Human cGMP gated channel beta subunit

Identity

1. g02037t00002-cGMP gated channel beta subunit

2. Human cGMP gated channel beta subunit

Identity

1. g02037t00002-cGMP gated channel beta subunit

2. Human cGMP gated channel beta subunit

Identity

1. g02037t00002-cGMP gated channel beta subunit

2. Human cGMP gated channel beta subunit

Identity

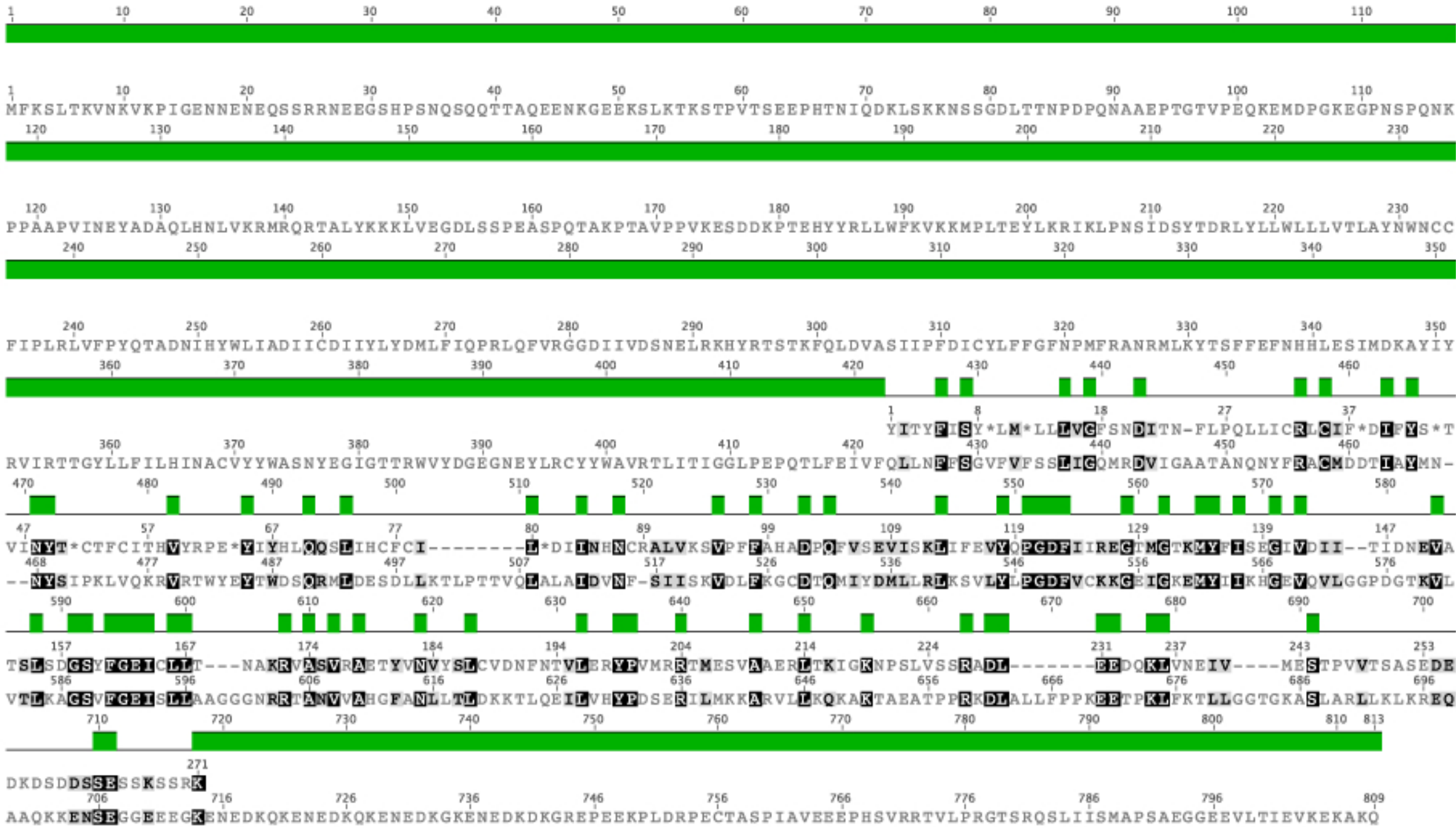
1. g02037t00002-cGMP gated channel beta subunit

2. Human cGMP gated channel beta subunit

Identity

1. g02037t00002-cGMP gated channel beta subunit

2. Human cGMP gated channel beta subunit



D

Identity

1. g15652t00001-Go-protein alpha subunit

2. Human Go-protein alpha subunit

Identity

1. g15652t00001-Go-protein alpha subunit

2. Human Go-protein alpha subunit

Identity

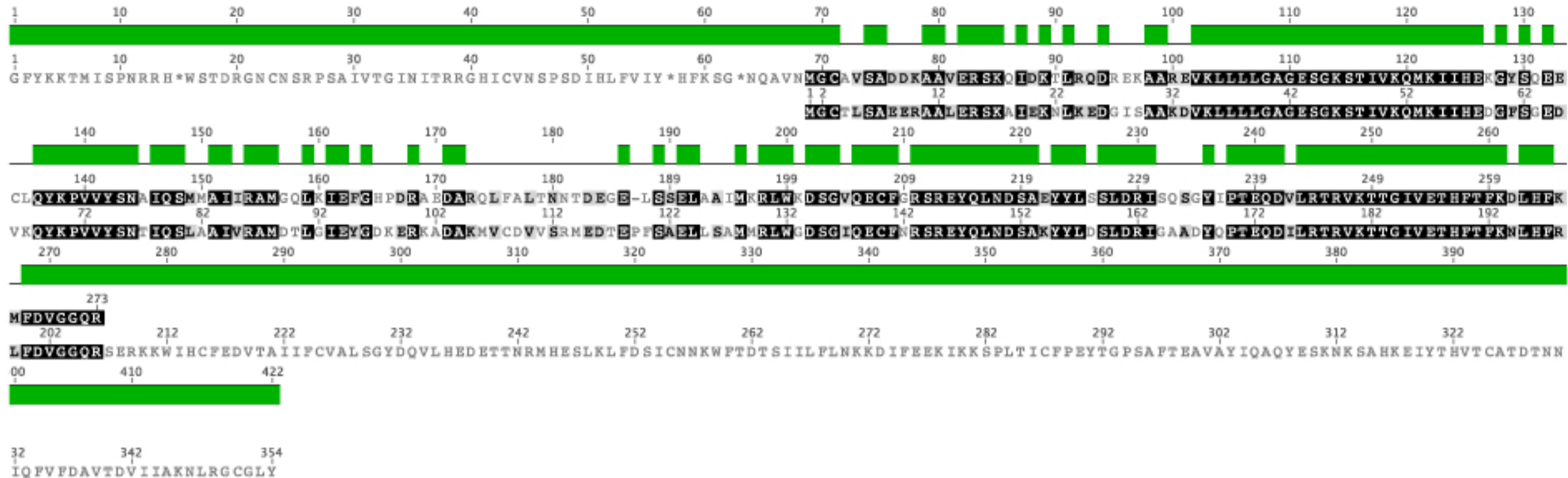
1. g15652t00001-Go-protein alpha subunit

2. Human Go-protein alpha subunit

Identity

1. g15652t00001-Go-protein alpha subunit

2. Human Go-protein alpha subunit



E

Identity

1. g14249t00001-Gt-protein alpha subunit

2. Human Gt-protein alpha subunit

Identity

1. g14249t00001-Gt-protein alpha subunit

2. Human Gt-protein alpha subunit

Identity

1. q14249t00001-Gt-protein alpha subunit

2. Human Gt-protein alpha subunit

Identity

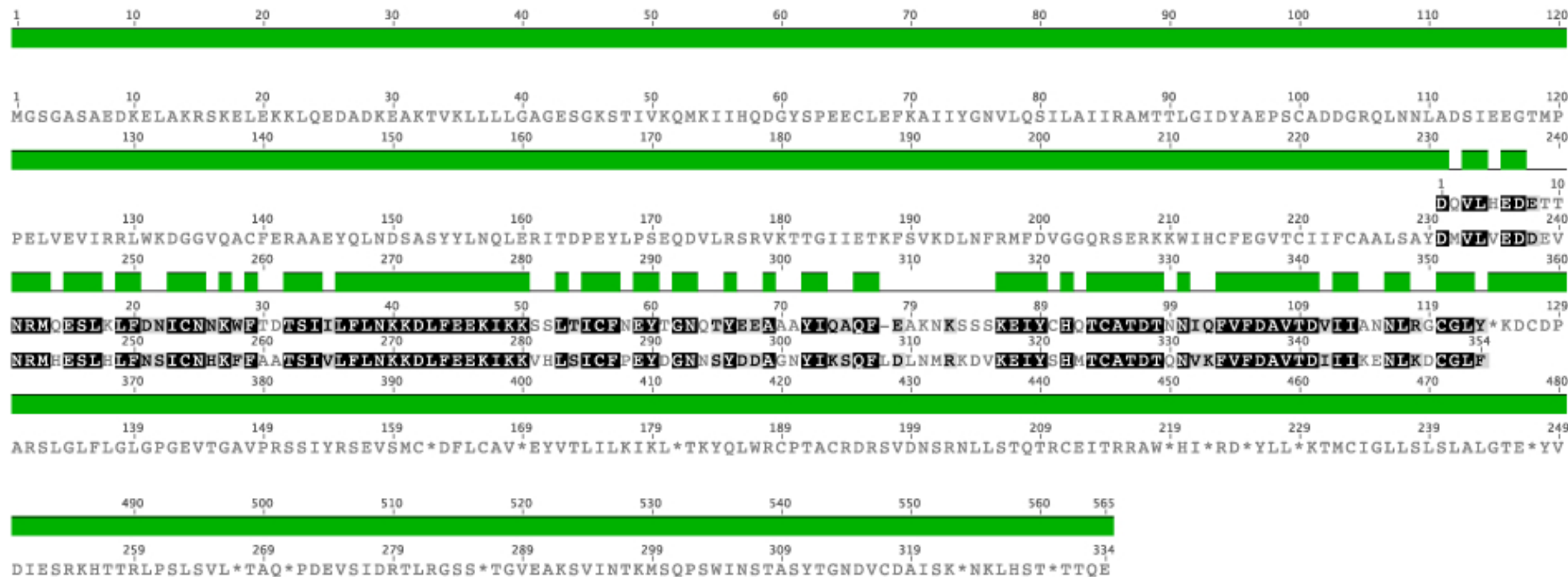
1. q14249t00001-Gt-protein alpha subunit

2. Human Gt-protein alpha subunit

Identity

1. g14249t00001-Gt-protein alpha subunit

2. Human Gt-protein alpha subunit



F

Identity

1. Drosophila G-protein beta subunit

2. g16634t00001-G-protein beta subunit

Identity

1. Drosophila G-protein beta subunit

2. g16634t00001-G-protein beta subunit

Identity

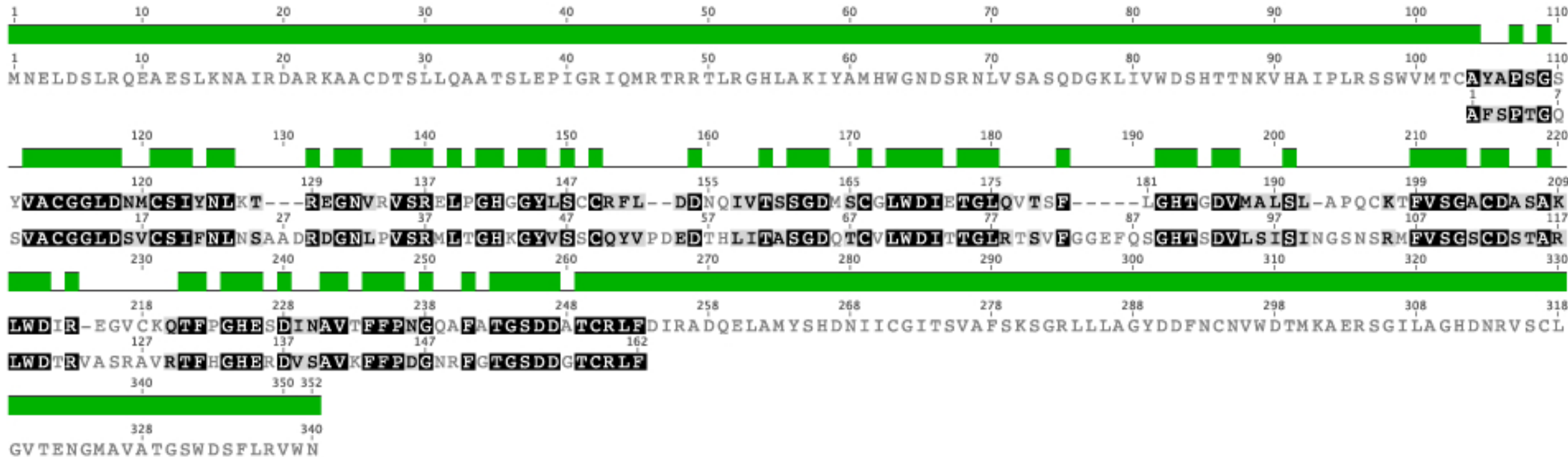
1. Drosophila G-protein beta subunit

2. g16634t00001-G-protein beta subunit

Identity

1. Drosophila G-protein beta subunit

2. g16634t00001-G-protein beta subunit

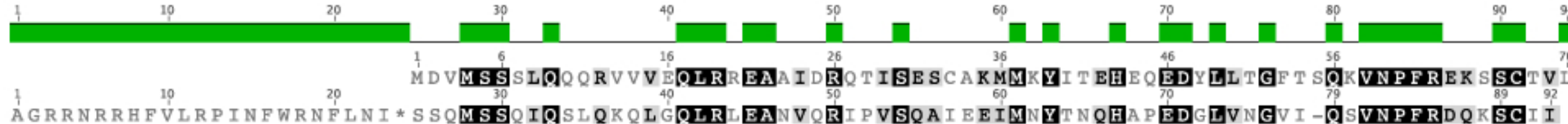


G

Identity

1. Drosophila G-protein gamma subunit

2. g18996t00001-G-protein gamma subunit



H

Identity

1. g09524t00001-opsin

2. Human opsin

Identity

1. g09524t00001-opsin

2. Human opsin

Identity

1. g09524t00001-opsin

2. Human opsin

Identity

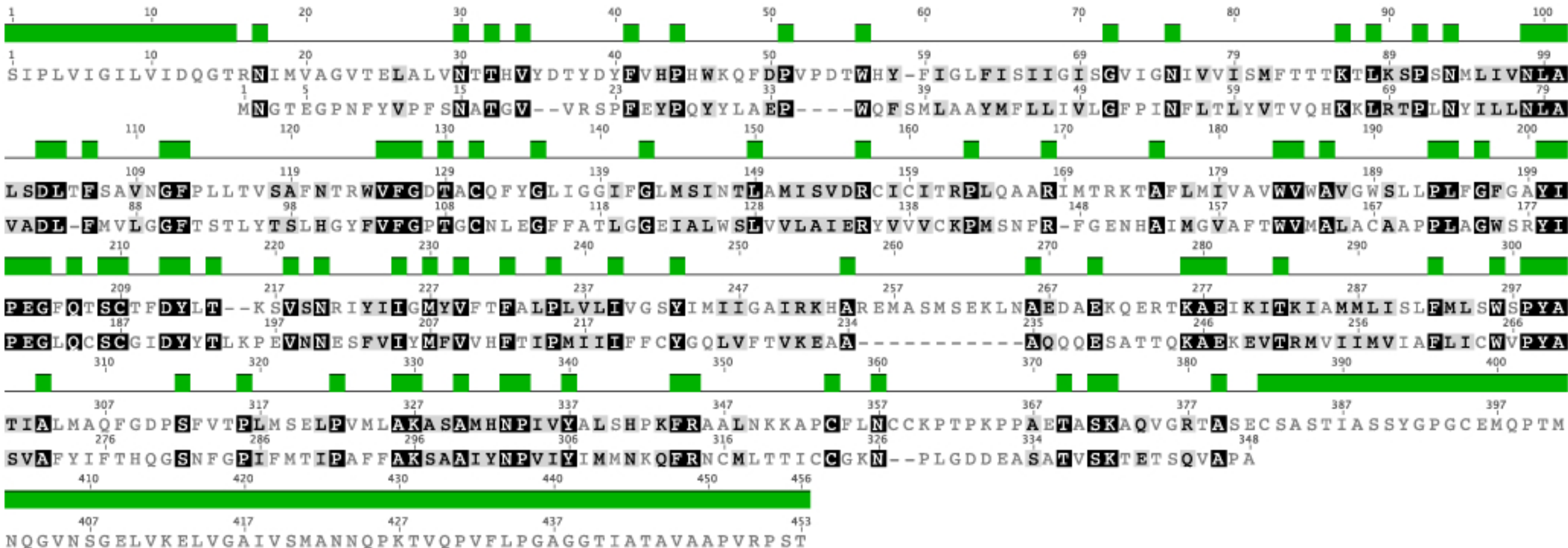
1. g09524t00001-opsin

2. Human opsin

Identity

1. g09524t00001-opsin

2. Human opsin



1 10 20 30 40 50 60 70 80 90 100 110 120 130
MGEVTAEEVEKFLDSNIGFAKQYYNLHYRAKLISDLLGAKEAAVDPSNYHSPSSMEESEIIPDLLLRDFQENLQTEKCIFNVMMKKLCPLLQADRMSLFMYRTRNGIAELATRLPNVHKDAVLEDCLVMPDQEIVFPLD
140 150 160 170 180 190 200 210 220 230 240 250 260 270

[illegible]

140 150 160 170 180 190 200 210 220 230 240 250 260 270
MGIVGHVAHSKKIANVPNTTEDEHFCDFVDILTEYKTKNILASPIMNGKDVVAIMAVNKVDGSHFTKRDEEILLKYLNFANLIMKVYHLSYLNHCETRRGQILLWSGSKVFEELTDIERQFHKALYTVRAFLNCDR
280 290 300 310 320 330 340 350 360 370 380 390 400 410

280 290 300 310 320 330 340 350 360 370 380 390 400 410
Y SVGLLDMTKQKEFFDVWPVLMGEVPPYSGPRTPDGREINFYKVIDYILHGKEDIKVIPNPPPDHWALVSGLPAYVAQNGLICNIMNAPAEDEFFAFQKEPLDESGWMIKNVL SMPIVNKKKEEIVGVATFYNRKDGKP
420 430 440 450 460 470 480 490 500 510 520 530 540

FDENDETLMESLTQFLGWSVLNPDITYESMNKLENRKDIFQDIVKYHVKCDNEEIQKILKTREVIYGKEPWECEEEELAEILQAEIPDADKYEINKFHFSDLPLETELVKCGIQMYEELKVVDKPFHIPQEAELVRFMYSS

550	560	570	580	590	600	610	620	630	640	650	660	670	680
-----	-----	-----	-----	-----	-----	-----	-----	-----	-----	-----	-----	-----	-----

Age Group	Total	Male	Female	Male	Female
18-24	28%	25%	31%	22%	28%
25-34	22%	20%	24%	18%	22%
35-44	18%	16%	20%	14%	18%
45-54	12%	10%	14%	8%	12%
55-64	8%	6%	10%	4%	8%
65-74	4%	2%	6%	2%	4%
75+	2%	1%	3%	1%	2%

VRKNYRNVFYHNWHAFTVAHAFPTVLRAK--HEFSPFESLALFVACLCHDDHRGKTNAFMVKRSPLAIIYSTSTMEHHFHNHTITILONEGHNIFKHLSSEEYKHLGLDIRHCILATDLALFSPPTVPAFRIR
 550 560 570 580 590 600 610 620 630 640 650 660 670 680
 LSKGYRKITYHNWRHFNVGOTMPSLLVTGKLRKYFDLEALAMVTAAACHDDHGRGTNNLYOMKSNPLAKLHGSSILERHLEFGKTLRDRSLNIFONLNRROHEHAHMMMDIALIATDLALYFKKRTMFOKIV

690	700	710	720	730	740	750	760	770	780	790	800	810	820
-----	-----	-----	-----	-----	-----	-----	-----	-----	-----	-----	-----	-----	-----

130 140 150 160 170 180 190 200 210 220 230 240 250
 TGMN¹³⁰SRGIT¹⁴⁰ENTG¹⁵⁰Y¹⁶⁰SW--¹⁷⁰PT¹⁸⁰A*PP¹⁹⁰VIC²⁰⁰VLC²¹⁰FN²²⁰PGT²³⁰SSL²⁴⁰TS²⁵⁰STS²⁶⁰*WK²⁷⁰SSG²⁸⁰SR²⁹⁰V³⁰⁰PRR³¹⁰GRG³²⁰*PP³³⁰CR³⁴⁰*W³⁵⁰TR³⁶⁰RS³⁷⁰ST³⁸⁰SL³⁹⁰T*⁴⁰⁰RSD⁴¹⁰S*⁴²⁰LG⁴³⁰FV⁴⁴⁰SPAM⁴⁵⁰N*⁴⁶⁰W⁴⁷⁰ARS⁴⁸⁰SP⁴⁹⁰RR⁵⁰⁰PC⁵¹⁰RW⁵²⁰RV⁵³⁰QK⁵⁴⁰I*⁵⁵⁰E-⁵⁶⁰DG⁵⁷⁰RN⁵⁸⁰*Q⁵⁹⁰SN⁶⁰⁰RP⁶¹⁰KI⁶²⁰N⁶³⁰QRR
 690 700 710 720 730 740 750 760 770 780 790 800 810 820
 DQSK⁶⁹⁰TY⁷⁰⁰ES⁷¹⁰EO⁷²⁰W⁷³⁰TO⁷⁴⁰Y⁷⁵⁰N⁷⁶⁰ML⁷⁷⁰E⁷⁸⁰OT⁷⁹⁰TK⁸⁰⁰KEI⁸¹⁰V⁸²⁰MA⁸³⁰MM⁸⁴⁰TA⁸⁵⁰CD⁸⁶⁰LS⁸⁷⁰AI⁸⁸⁰TK⁸⁹⁰P⁹⁰⁰WE⁹¹⁰VO⁹²⁰SO⁹³⁰VA⁹⁴⁰LL⁹⁵⁰V⁹⁶⁰AA⁹⁷⁰EP⁹⁸⁰WE⁹⁹⁰OG¹⁰⁰⁰DL¹⁰¹⁰ER¹⁰²⁰TV¹⁰³⁰LO¹⁰⁴⁰NP¹⁰⁵⁰IP¹⁰⁶⁰MM¹⁰⁷⁰DR¹⁰⁸⁰NK¹⁰⁹⁰AD¹¹⁰⁰EL¹¹¹⁰PK¹¹²⁰LO¹¹³⁰VG¹¹⁴⁰FI¹¹⁵⁰DF¹¹⁶⁰CT¹¹⁷⁰FV¹¹⁸⁰YK¹¹⁹⁰EF¹²⁰⁰SR¹²¹⁰FE¹²²⁰EE¹²³⁰IT¹²⁴⁰PML¹²⁵⁰DG¹²⁶⁰IT¹²⁷⁰NN¹²⁸⁰RK¹²⁹⁰EW¹³⁰⁰KAL¹³¹⁰AD¹³²⁰EY¹³³⁰DA¹³⁴⁰KMKV

830 840 850 860

QEEKKQKQQSAKSAAGNPPGGNPPSGGATTSSKSCCQ

Identity

1. g12994t00001-PDE6 beta subunit

2. Human PDE6 beta subunit

1

10

20

30

40

50

60

70

80

90

100

110

1

10

20

30

40

50

60

70

80

90

100

110

CVLVMRCH*TSRLVKVLIFS

SVVGCDVRP*WKKTTHGTFDGGESGTFPHEP*RLFGKVLRKAWFKRNAGKNDWEKDIKS*KYQHCEI*DFSSK*WPSN*KKIFGGGGHCRQICW

1

M

Identity

1. g12994t00001-PDE6 beta subunit

2. Human PDE6 beta subunit

120

130

140

150

160

170

180

190

200

210

220

120

130

138

145

155

162

172

182

192

202

212

SLGWL

PPVVT

TKELSHNQHVQAV

CGR--

TNEKIKKA--

SLVQ

NIV

SLRKL--

NEQELFMELIRDIA

TELDV

NVLC

HKILQ

NVSI

LT

KS

DRG

SLFL

VR

GN

DHR

KFL

LV

SK

LF

DV

SL

SEEQAR

S

FLDQ

N

PDFAR

Q

YFG

KKLS

P

ENVAA

A

CEDG

C

PPDCD

SLR

D

L

CQV

E

ESTAL

L

ELVQ

D

M

QES

I

N

M

E

R

V

V

F

K

V

L

R

R

L

C

T

L

L

O

A

D

R

C

S

L

F

M

Y

R

Q

R

N

G

V

A

E

L

A

T

R

L

F

S

V

Identity

1. g12994t00001-PDE6 beta subunit

2. Human PDE6 beta subunit

230

240

250

260

270

280

290

300

310

320

330

222

232

242

252

262

272

282

292

302

312

322

TR

T

S

T

P

E

E

S

I

H

T

E

E

N

E

I

K

V

P

F

G

R

G

I

A

G

H

V

A

E

T

K

G

T

I

N

I

E

E

A

Y

D

D

P

R

F

N

Q

D

V

D

K

K

T

G

Y

R

T

H

S

I

L

C

M

P

I

L

S

Y

D

D

E

L

V

G

V

A

Q

I

I

N

K

V

D

G

P

H

E

F

T

K

O

D

E

E

Y

F

R

O

Y

L

I

F

C

G

I

G

I

T

N

A

Q

P

D

S

V

L

E

D

C

L

V

P

P

D

S

E

I

V

F

P

L

D

I

G

V

V

G

H

V

A

O

T

K

K

M

V

N

V

E

D

V

A

E

C

P

H

F

S

S

F

A

D

E

L

T

D

Y

K

T

K

N

M

L

A

T

P

I

M

N

G

K

D

-

V

V

A

V

I

M

A

V

N

K

L

N

G

P

F

-

F

T

S

E

D

E

D

V

F

L

K

Y

L

N

F

A

T

L

Y

L

K

I

Y

Identity

1. g12994t00001-PDE6 beta subunit

2. Human PDE6 beta subunit

340

350

360

370

380

390

400

410

420

430

440

332

342

352

362

372

382

395

Q

L

F

E

M

S

V

Q

E

Y

K

R

N

O

L

L

N

L

A

R

G

V

F

E

E

Q

T

S

L

E

K

L

L

Q

K

I

I

L

Q

A

Q

D

L

L

K

C

E

R

C

L

V

Y

L

L

D

V

L

D

Q

D

-

A

D

C

P

K

H

L

S

Y

L

H

N

C

E

T

R

R

G

O

V

L

L

W

S

A

N

K

V

F

E

E

L

T

D

I

E

R

Q

P

H

K

A

F

Y

T

V

R

A

Y

L

N

C

E

R

Y

S

V

G

L

L

D

M

T

K

E

K

E

F

F

D

V

W

S

V

L

M

G

E

S

Q

P

Y

S

G

P

R

T

P

D

G

R

E

I

V

F

Y

K

V

I

D

Y

V

L

H

G

K

E

E

I

K

V

I

P

T

P

S

A

Identity

1. g12994t00001-PDE6 beta subunit

2. Human PDE6 beta subunit

450

460

470

480

490

500

510

520

530

540

550

560

D

H

W

A

L

A

S

G

L

P

S

Y

V

A

E

S

G

F

I

C

N

I

M

N

A

S

A

D

E

M

F

K

F

Q

E

G

A

L

D

D

S

G

W

L

I

K

N

V

L

S

M

P

I

V

N

K

K

E

E

I

V

G

V

A

T

F

Y

N

R

K

D

G

K

P

F

D

E

Q

D

E

V

L

M

E

S

L

T

Q

F

L

G

S

V

M

N

T

D

T

Y

D

K

M

N

K

L

E

N

R

K

D

I

Identity

1. g12994t00001-PDE6 beta subunit

2. Human PDE6 beta subunit

570

580

590

600

610

620

630

640

650

660

670

A

Q

D

M

V

L

Y

H

V

K

C

D

R

D

E

I

Q

L

I

L

P

T

R

A

R

L

G

K

E

P

A

D

C

D

E

D

E

L

G

E

I

L

K

E

E

L

P

G

P

T

T

F

D

I

Y

E

F

H

F

S

D

L

E

C

T

E

L

D

L

V

K

C

G

I

Q

M

Y

Y

E

L

G

V

R

K

F

Q

I

P

Q

E

V

L

V

R

F

L

F

S

I

S

K

G

Y

R

R

I

T

Y

H

N

W

Identity

1. g12994t00001-PDE6 beta subunit

2. Human PDE6 beta subunit

680

690

700

710

720

730

740

750

760

770

780

R

H

G

F

N

V

A

Q

T

M

F

T

L

L

M

T

G

K

L

S

Y

T

D

L

E

A

F

A

M

V

T

A

G

L

C

H

D

I

D

H

R

G

T

N

N

L

Y

Q

M

K

S

Q

N

P

L

A

K

L

H

G

S

S

I

L

E

R

H

H

L

E

F

G

K

F

L

L

S

E

E

T

L

N

I

Y

Q

N

L

N

R

R

Q

H

E

H

V

I

H

L

M

D

I

A

I

A

T

D

L

A

L

Identity

1. g12994t00001-PDE6 beta subunit

2. Human PDE6 beta subunit

790

800

810

820

830

840

850

860

870

880

890

Y

F

K

K

R

A

M

F

Q

K

I

V

D

E

S

K

N

Y

Q

D

K

K

S

V

E

Y

L

S

L

E

T

T

R

K

E

I

V

M

A

M

M

T

A

C

D

L

S

A

I

T

K

P

W

E

V

Q

S

K

V

A

L

L

V

A

A

E

F

W

E

Q

G

D

L

E

R

T

V

L

D

Q

Q

P

I

P

M

M

D

R

N

K

A

A

E

L

P

K

L

Q

V

G

F

I

D

F

V

C

T

F

V

Y

Identity

1. g12994t00001-PDE6 beta subunit

2. Human PDE6 beta subunit

900

910

920

930

940

950

960

967

K

E

F

S

R

F

H

E

I

L

P

M

F

D

R

L

Q

N

N

R

K

E

W

K

A

L

A

D

E

Y

E

A

K

V

K

A

L

E

E

K

E

E

E

E

R

V

A

A

K

K

V

G

T

E

I

C

N

G

G

P

A

P

K

S

S

T

C

C

I

L

K

Identity

1. g12219t00001-protein kinase A

2. Human protein kinase A

Identity

1. g12219t00001-protein kinase A

2. Human protein kinase A

Identity

1. g12219t00001-protein kinase A

2. Human protein kinase A

Identity

1. g12219t00001-protein kinase A

2. Human protein kinase A

Identity

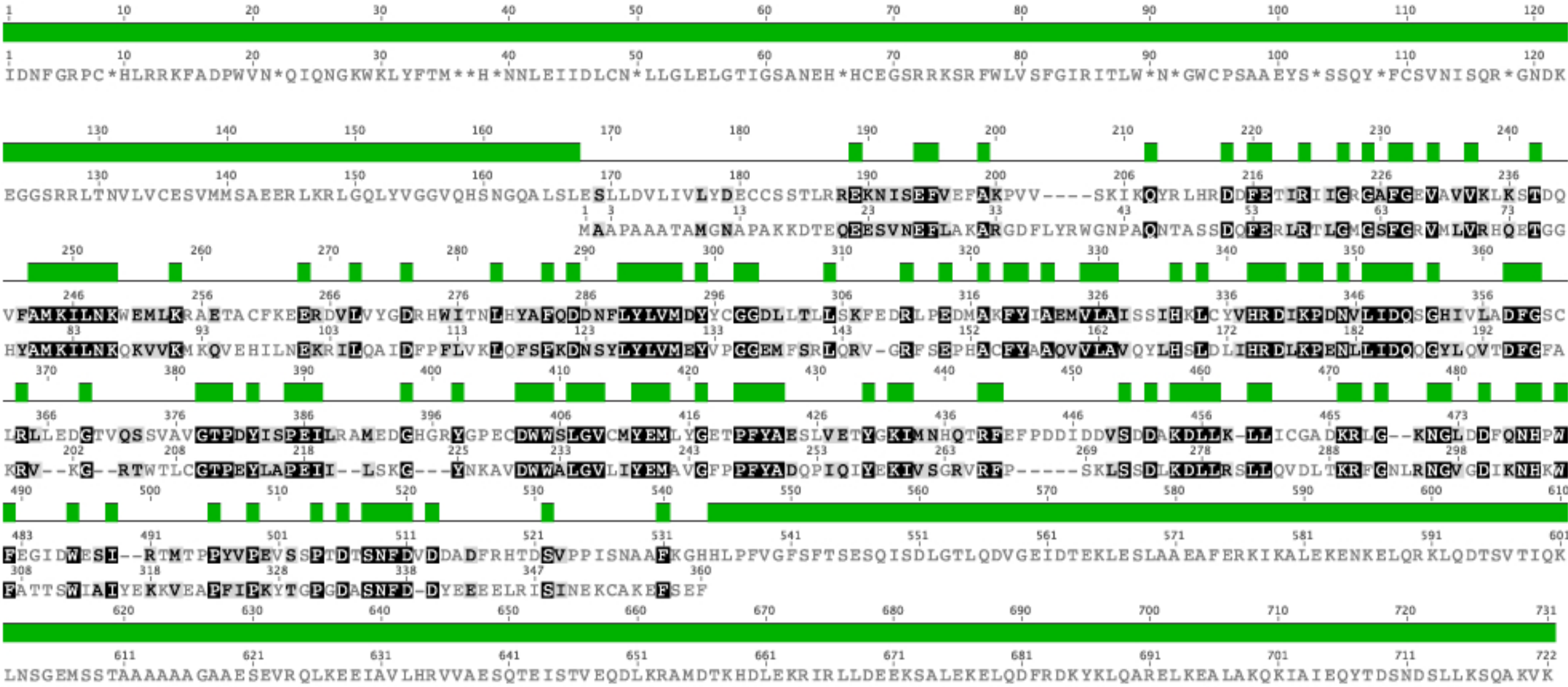
1. g12219t00001-protein kinase A

2. Human protein kinase A

Identity

1. g12219t00001-protein kinase A

2. Human protein kinase A



Identity

1. q04856t00001-rhodopsin kinase

2. Drosophila rhodopsin kinase

Identity

1. g04856t00001-rhodopsin kinase

2. Drosophila rhodopsin kinase

Identity

1. q04856t00001-rhodopsin kinase

2. Drosophila rhodopsin kinase

Identity

1. q04856t00001-rhodopsin kinase

2. Drosophila rhodopsin kinase

Identity

1. q04856t00001-rhodopsin kinase

2. Drosophila rhodopsin kinase

Identity

1. q04856t00001-rhodopsin kinase

2. Drosophila rhodopsin kinase