

## S1: ROC analyses under different resampling methods

Supporting information to "Natural wind variability triggered drop in German redispatch volume and costs from 2015 to 2016" by Wohland et al.

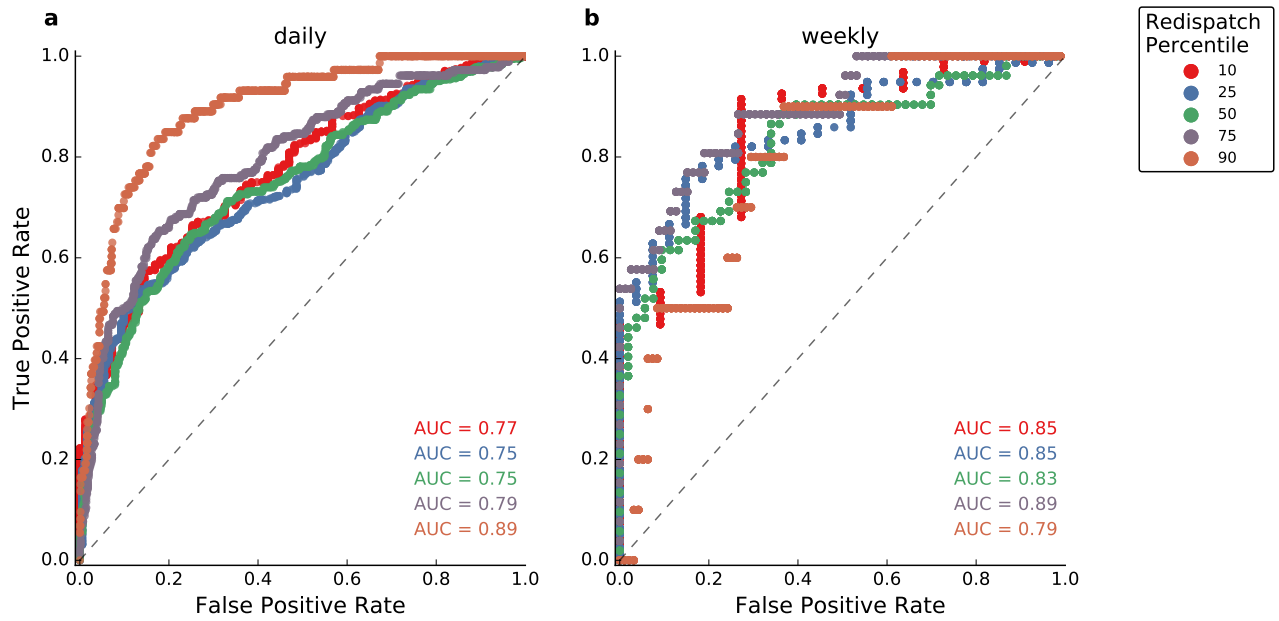


Figure S1: Same as Fig. 5 in the manuscript but for mean resampling of wind and max resampling of redispatch.

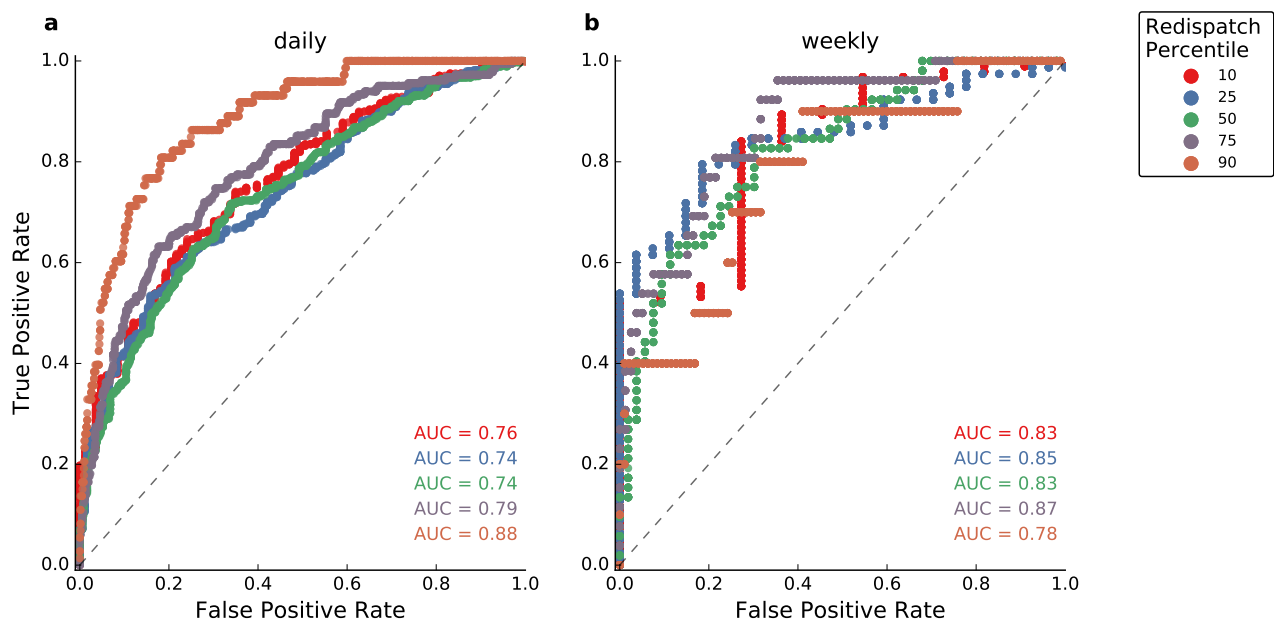


Figure S2: Same as Fig. 5 in the manuscript but for max resampling of wind and max resampling of redispatch.

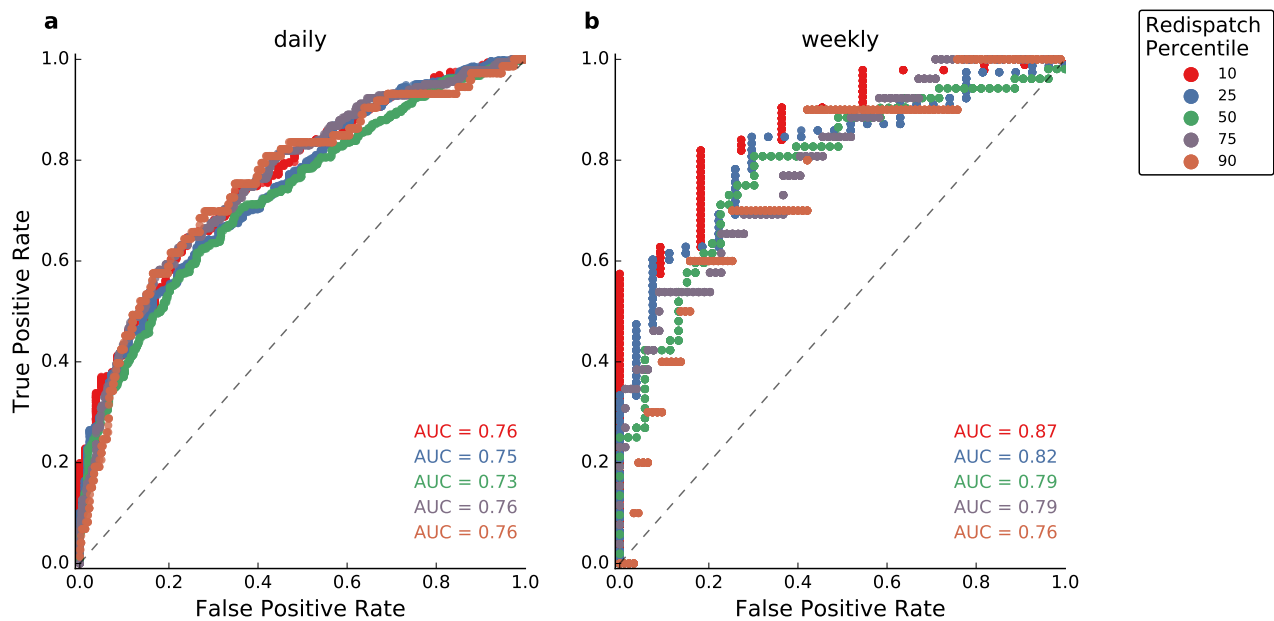


Figure S3: Same as Fig. 5 in the manuscript but for max resampling of wind and mean resampling of redispatch.