

Chemical Characterization of Lipophilic Constituents in the Skin of Migratory Adult Sea Lamprey from the Great Lakes Region

Amila A. Dissanayake,¹ Muraleedharan G. Nair,^{1,3*}

Bioactive Natural Products and Phytochemicals Laboratory, Department of Horticulture,
Michigan State University, East Lansing, Michigan 48824, USA

Supplemental data

For total lipid mixture

Figure A. ¹H NMR spectrum of total lipid mixture of sea lamprey in CDCl₃

Figure B. ¹³C NMR spectrum of total lipid mixture of sea lamprey in CDCl₃

Figure C. GC profile of methyl esters of total lipid mixture

For fatty acid mixture **D**

Figure D. ¹H NMR spectrum of fatty acid mixture in CDCl₃

Figure E. GC profile of methyl esters of fatty acid mixture

Figure F. GCMS of the lauric acid, methyl ester

Figure G. GCMS of the myristic acid, methyl ester

Figure H. GCMS of the myristoleic acid, methyl ester

Figure I. GCMS of the palmitic acid, methyl ester

Figure J. GCMS of the stearic acid, methyl ester

Figure K. GCMS of the oleic acid, methyl ester

Figure L. GCMS of the arachidonic acid, methyl ester

Figure M. GCMS of the eicosapentaenoic acid, methyl ester

Figure N. GCMS of the docosahexaenoic acid, methyl ester

Figure A

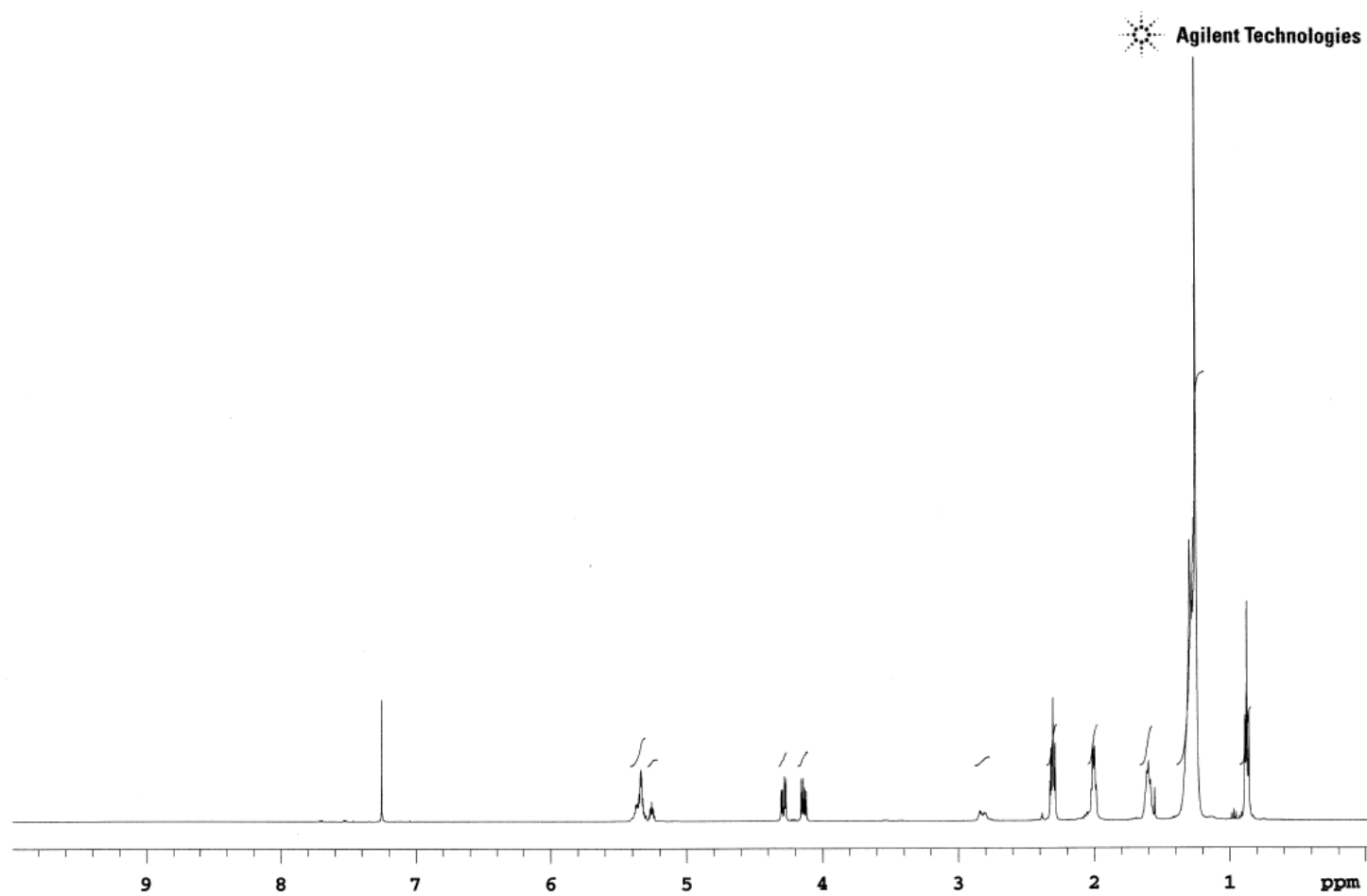
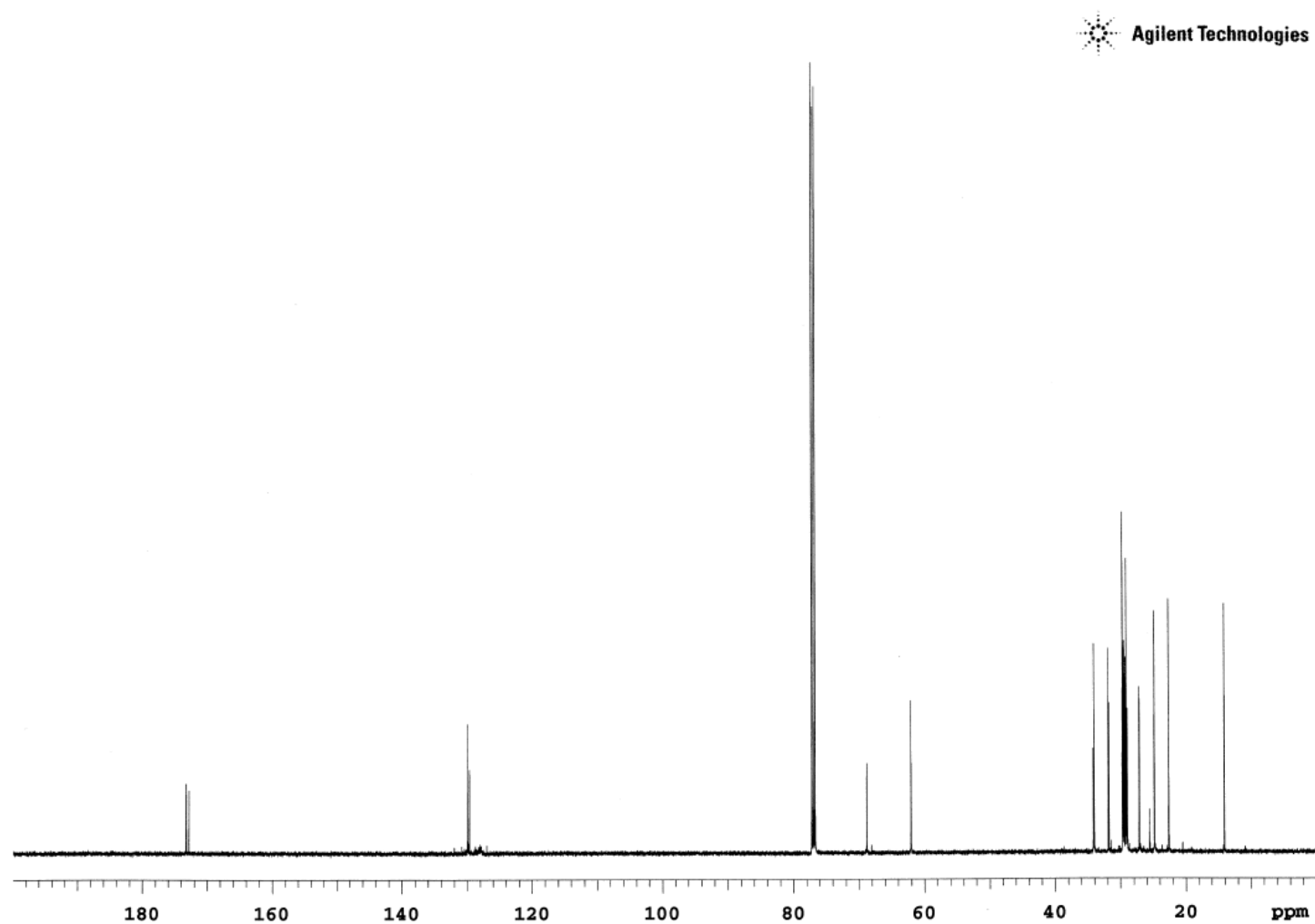


Figure B



Abundance
4.5e+07
4e+07
TIC: a072814_06.D\data.ms
thyl ester: 97
decanoate: 99
methyl ester: 99
decanoate: 90

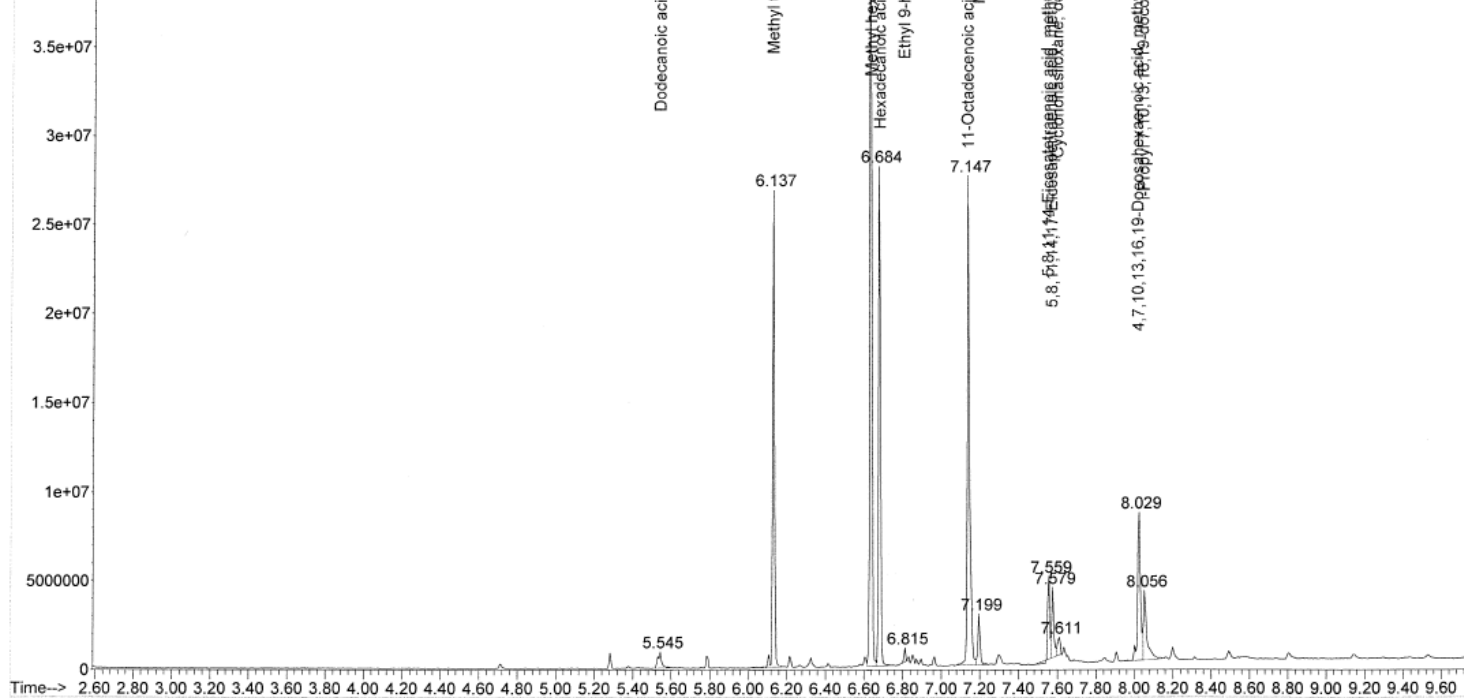


Figure D

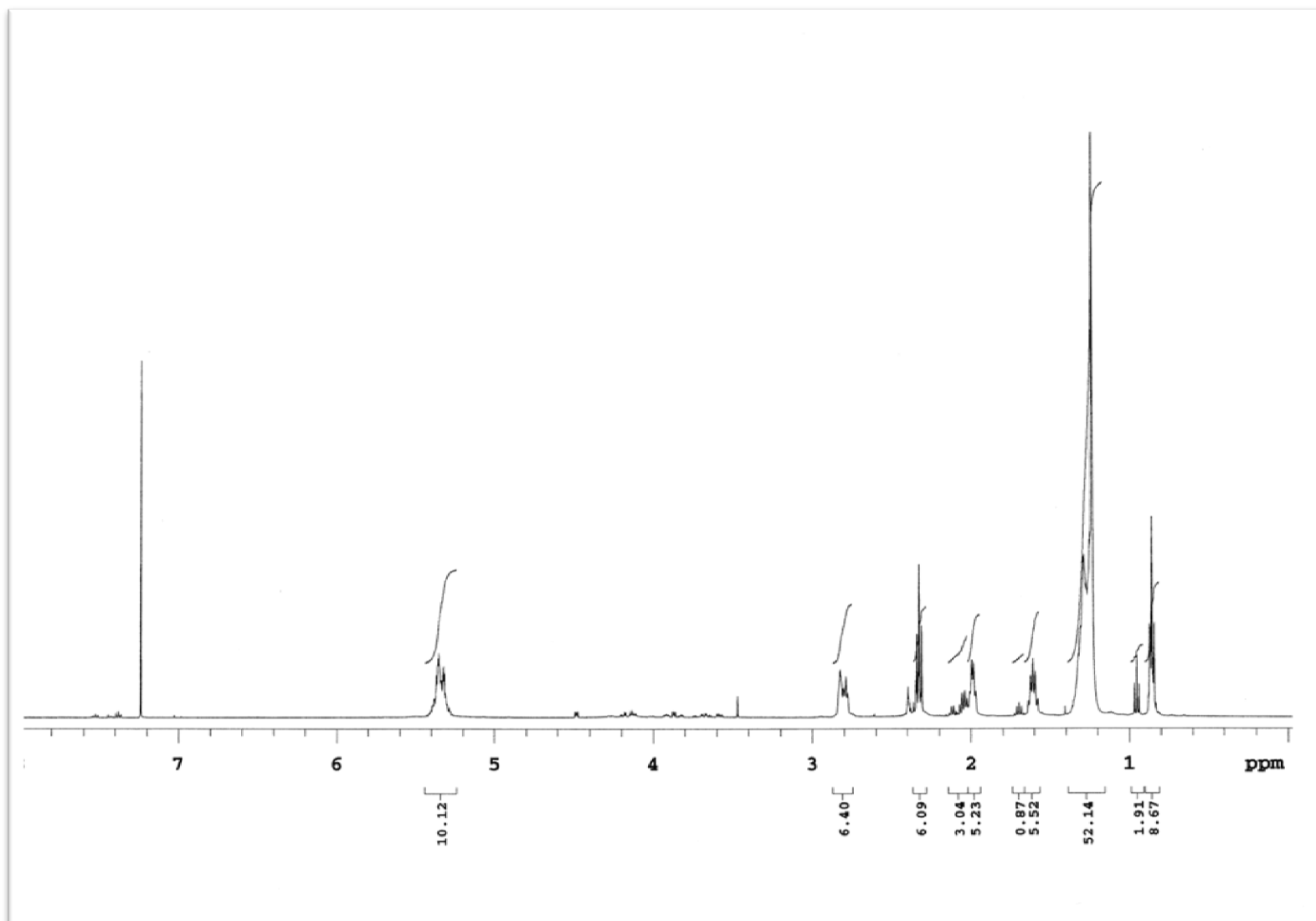


Figure E

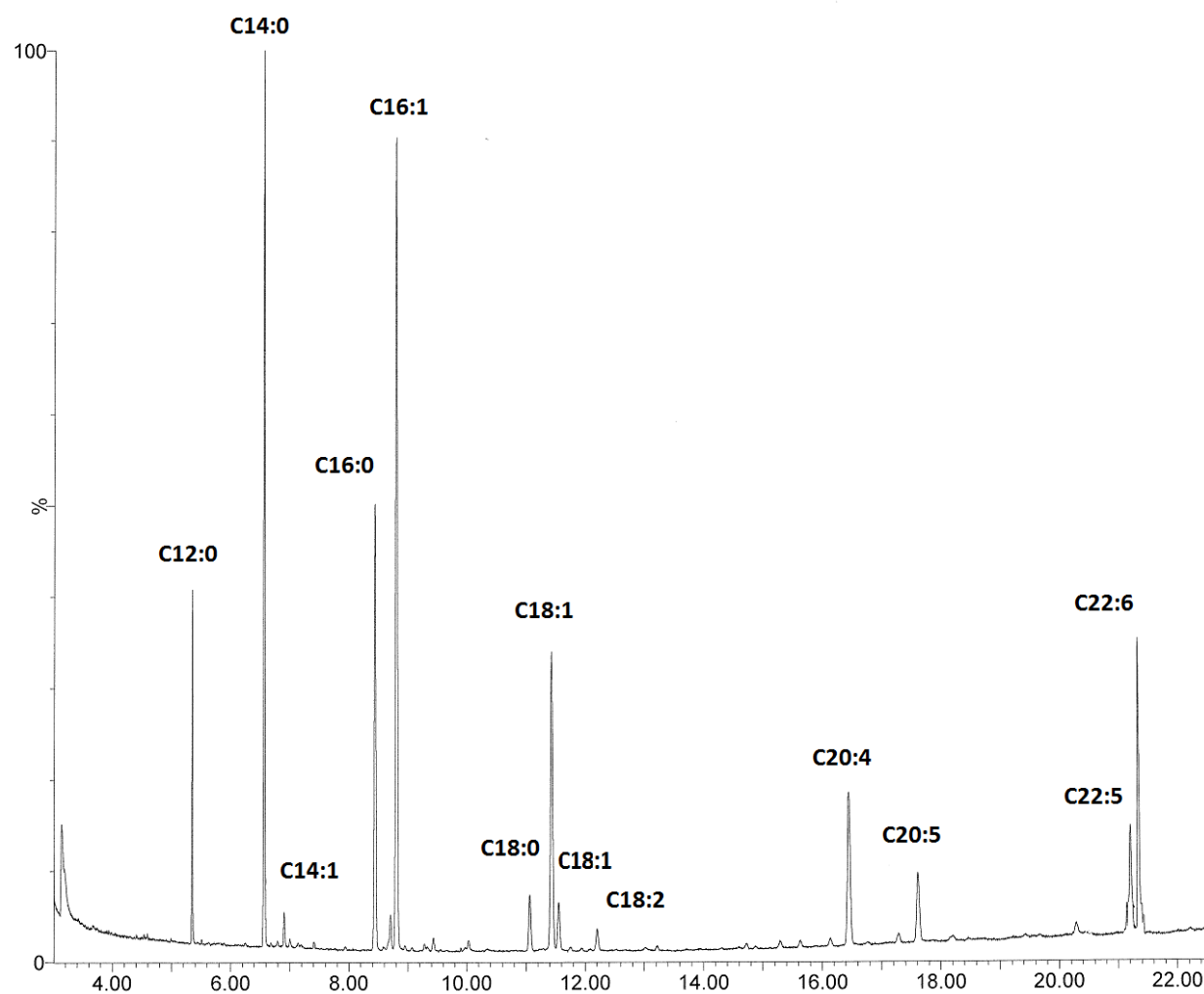


Figure F

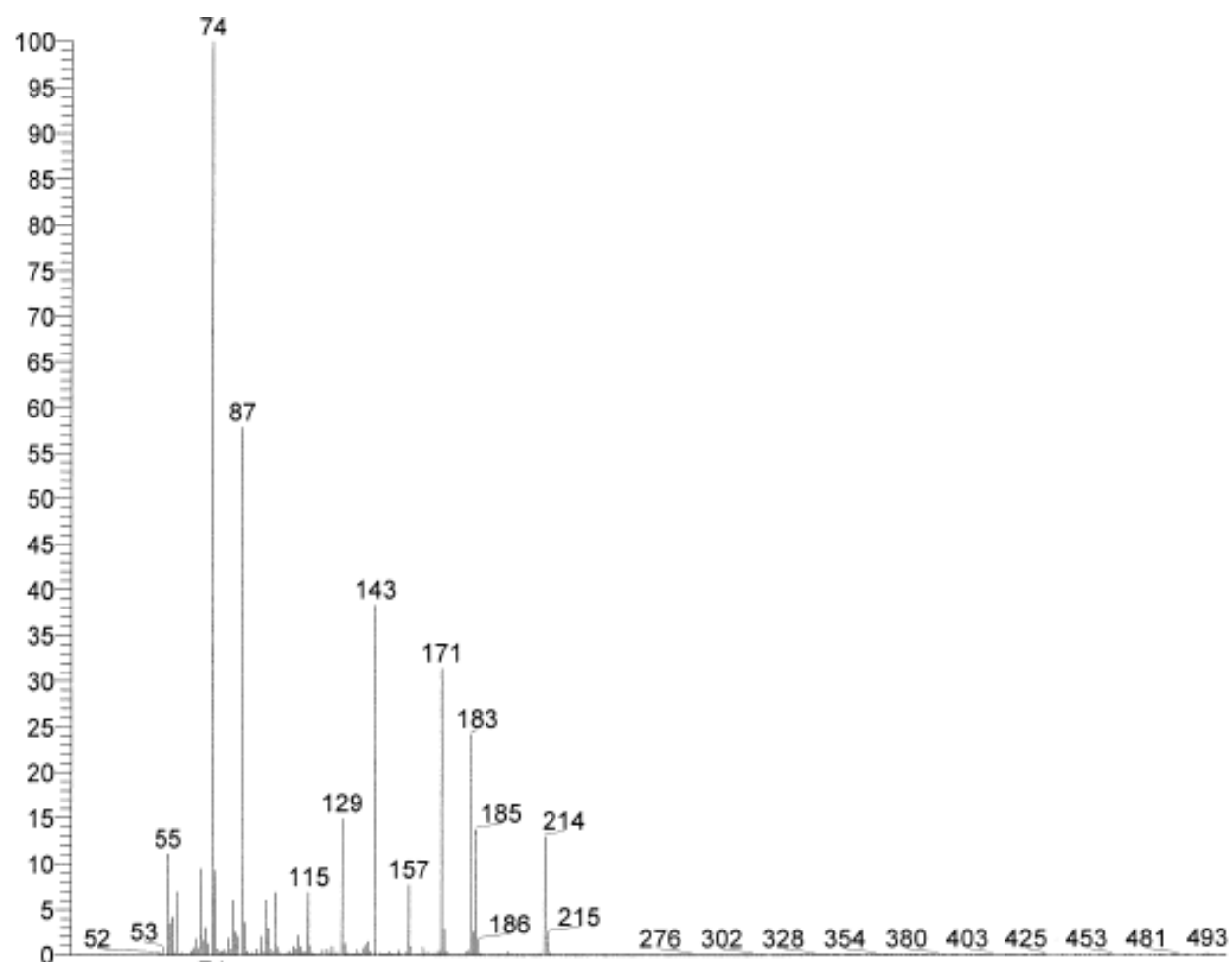


Figure G

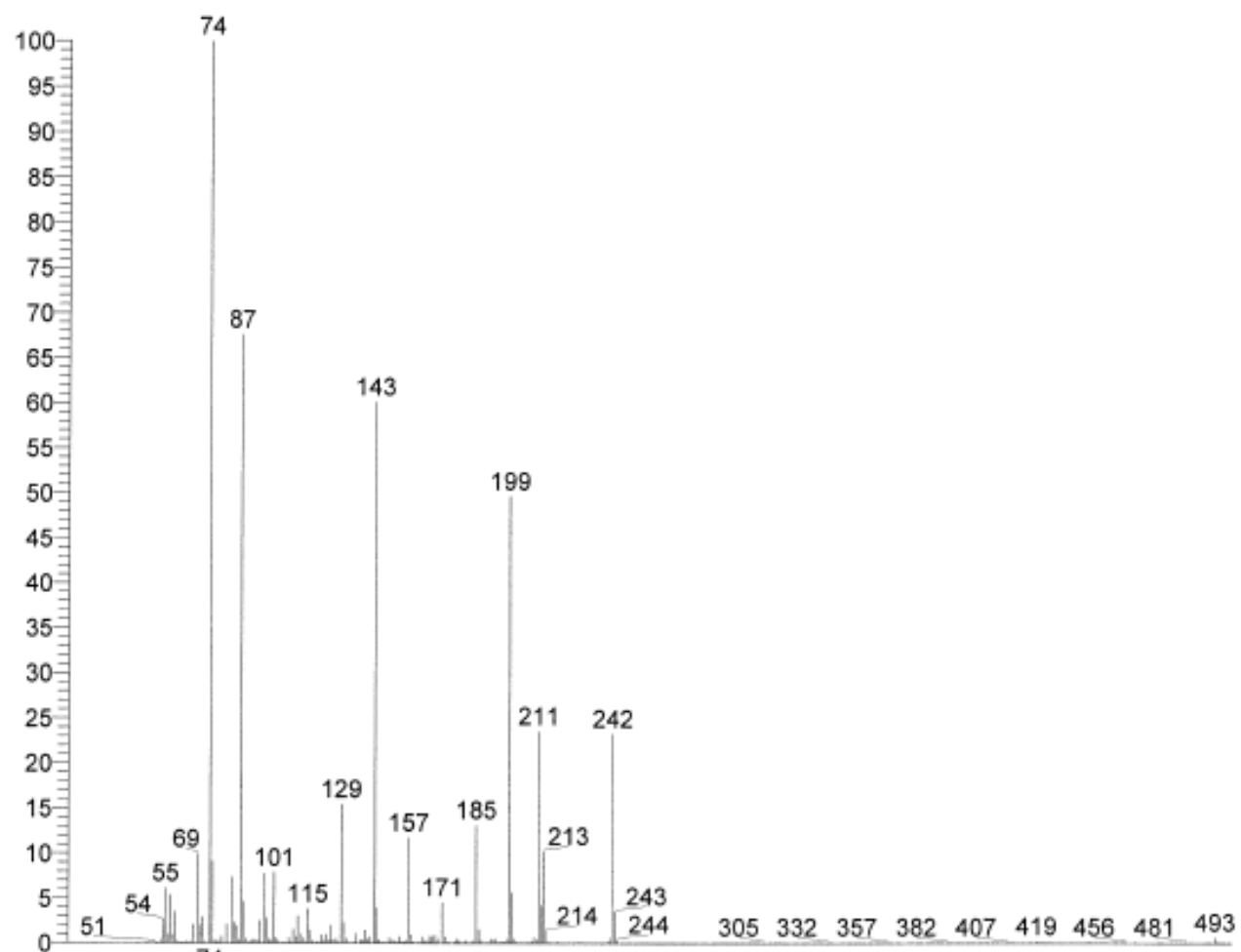


Figure H

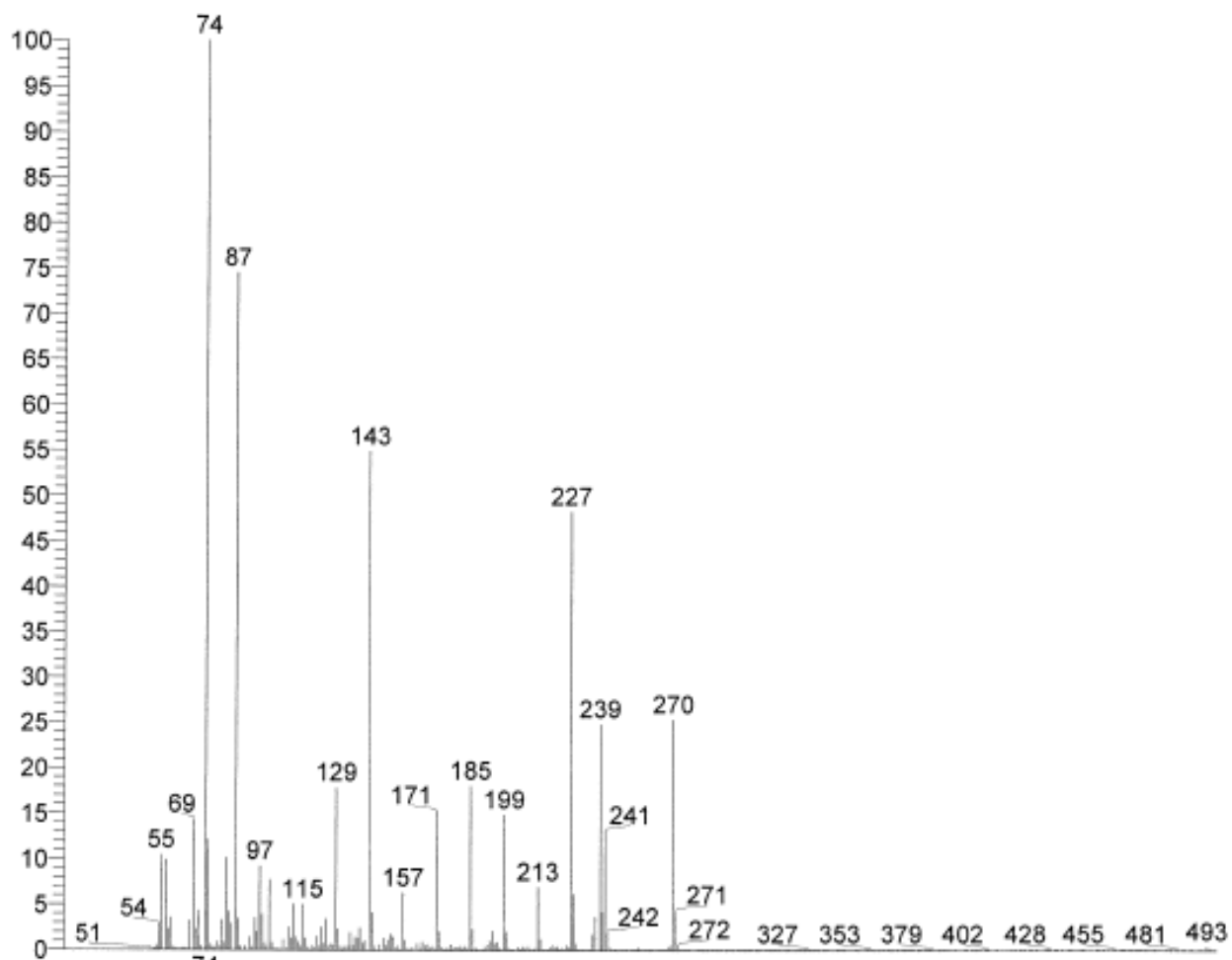


Figure I

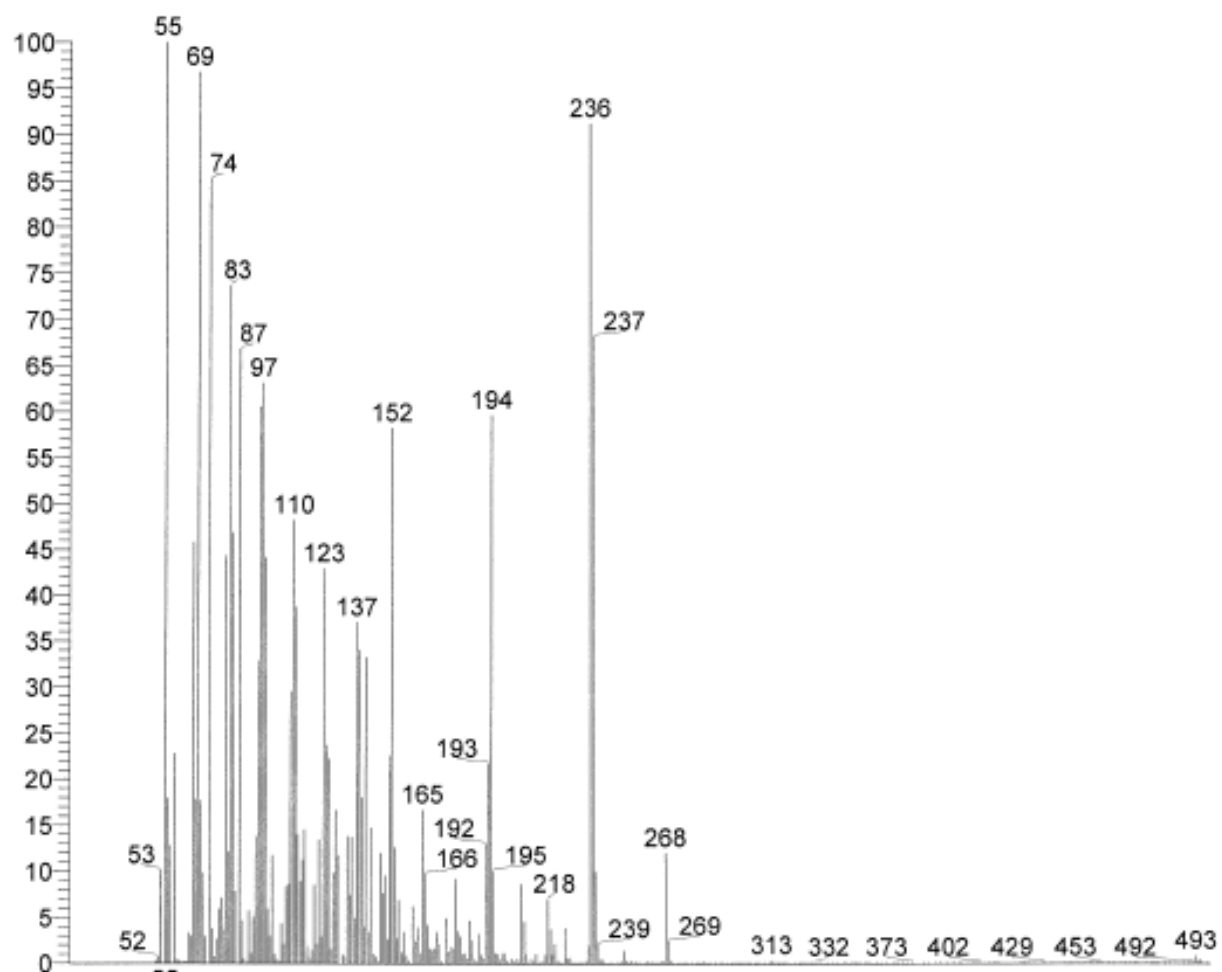


Figure J

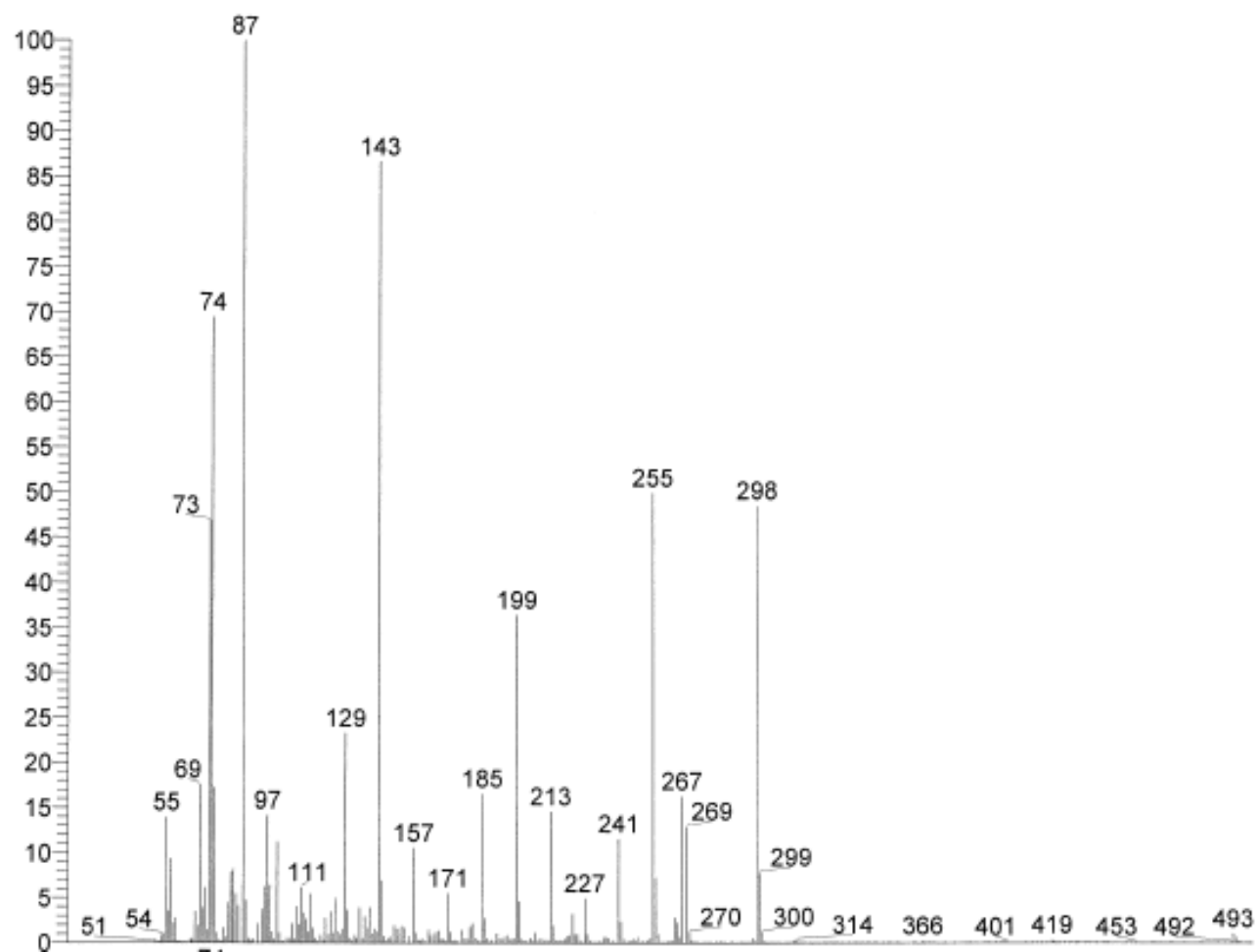


Figure K

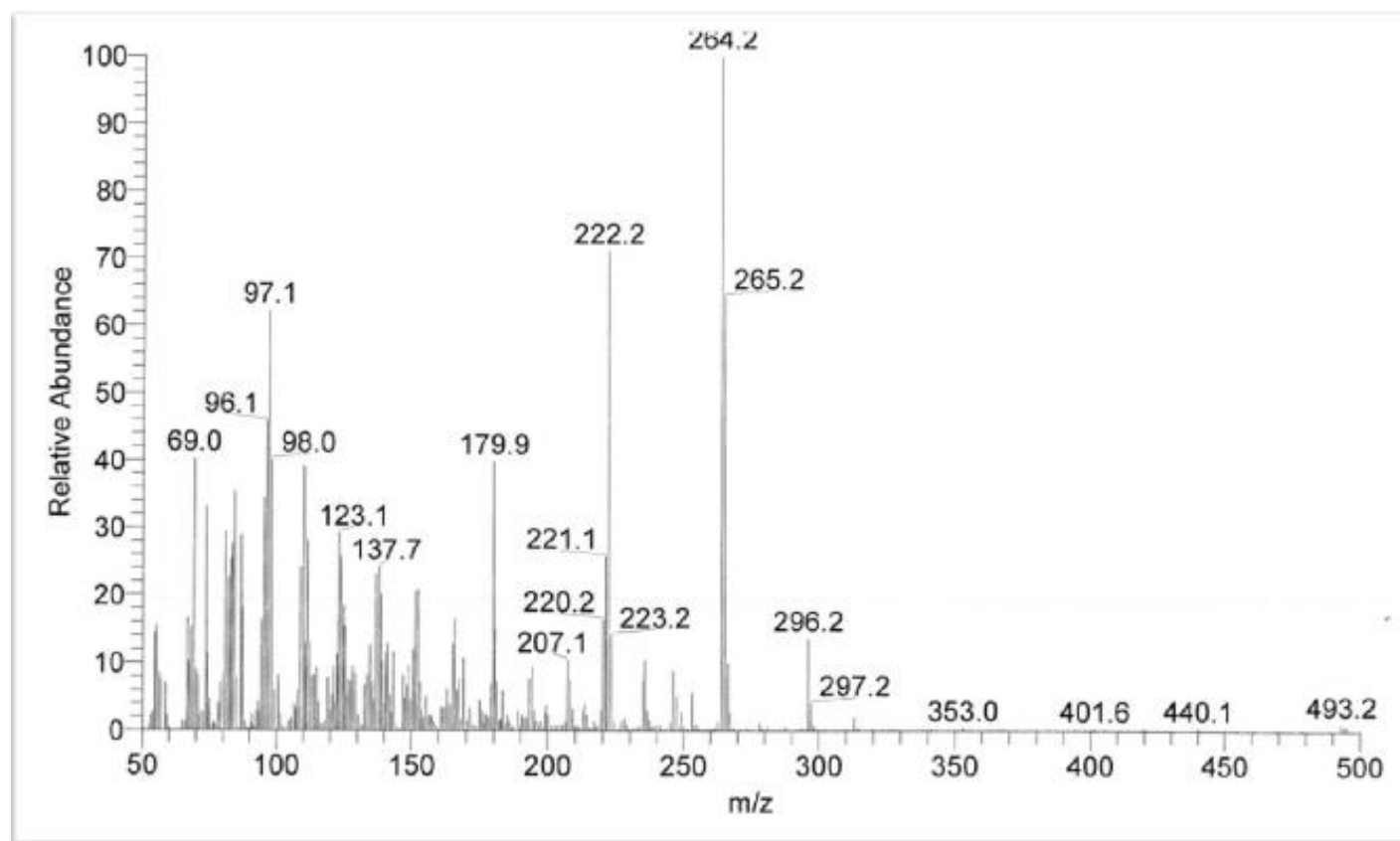


Figure L

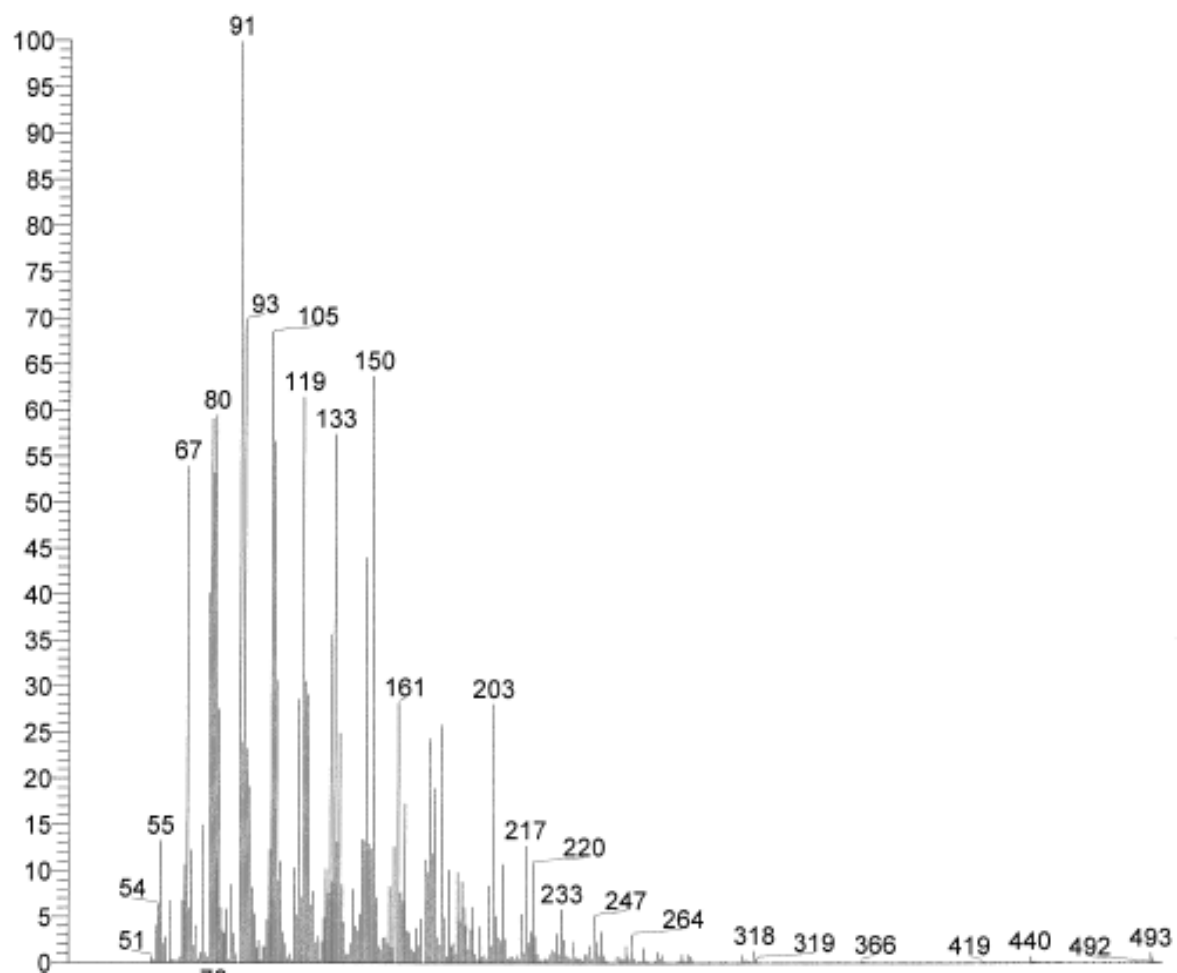


Figure M

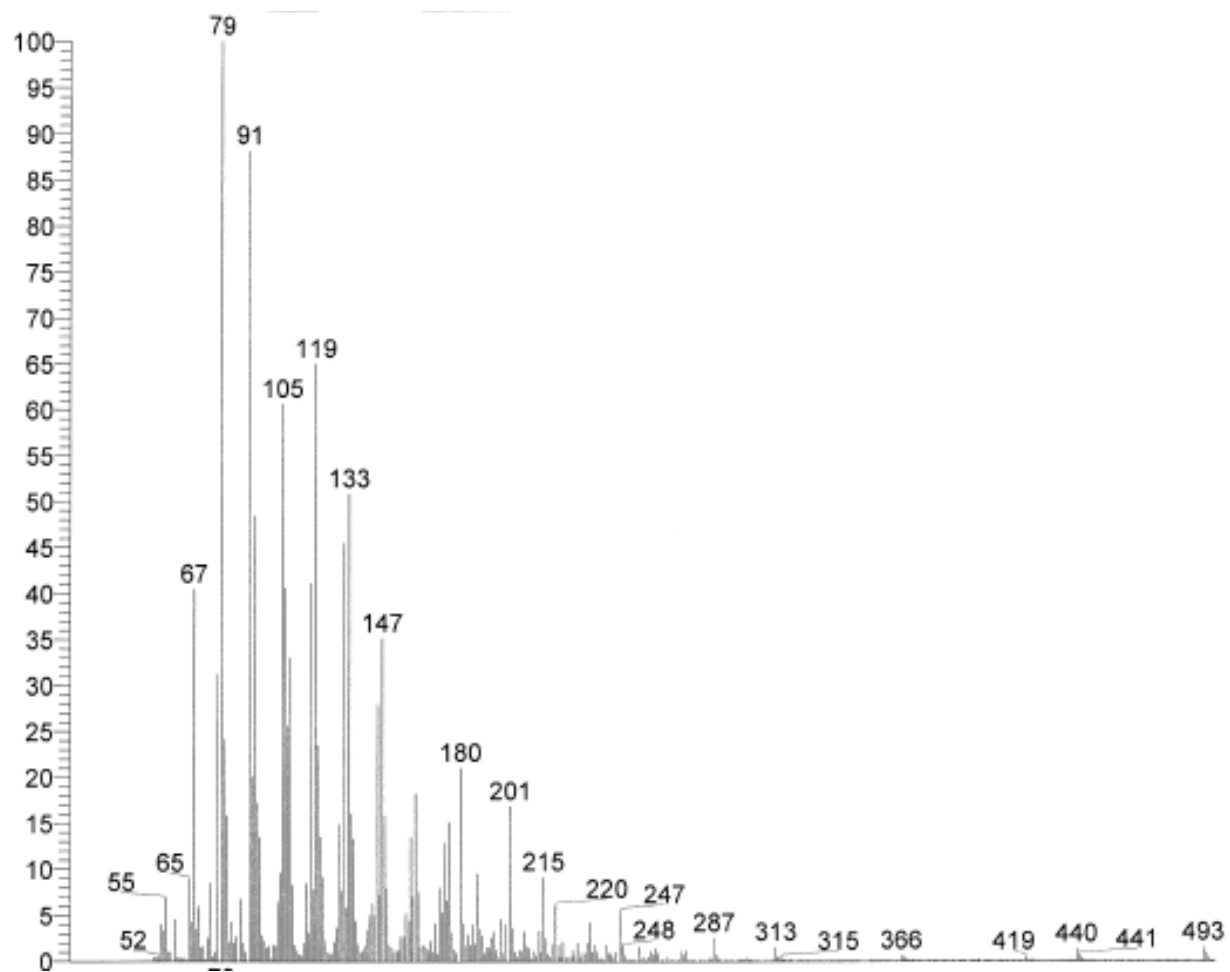


Figure N

