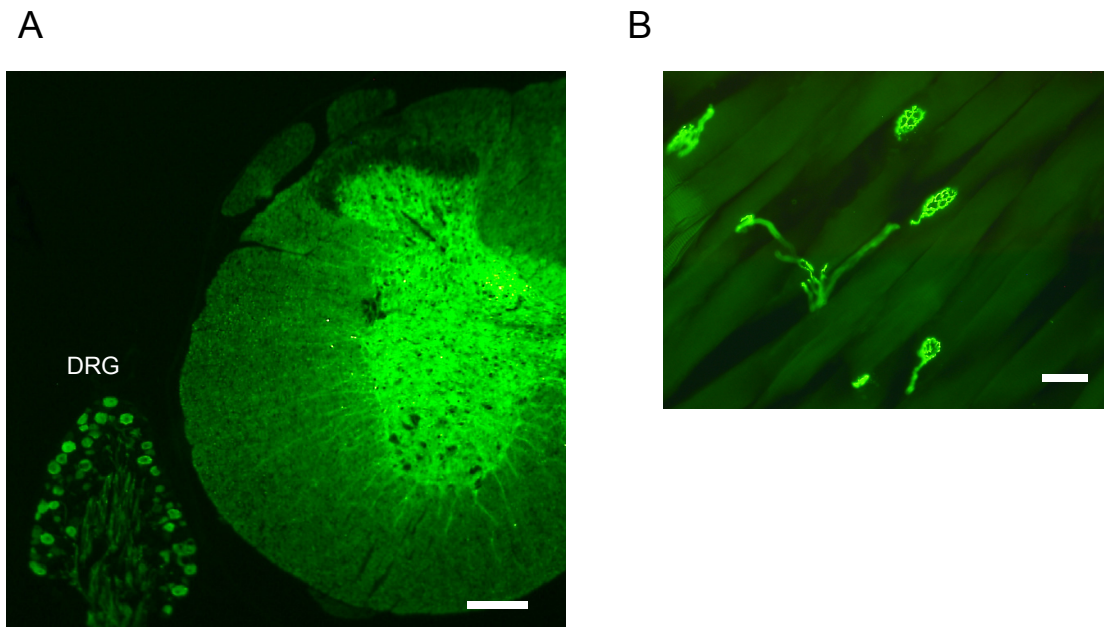


Figure S2 Expression of ChR2V in the spinal cord and the motor nerve terminals.



A. Transverse slices of spinal cord were immunohistochemically studied using anti-EGFP antibody with the Alexa Fluor 488-conjugated secondary anti-rabbit IgG. Note that the spinal motor neurons are expressed with ChR2V in the membrane of soma and axons. Scale, 200 μm . **B.** Intercostal muscle. The motor nerve terminals are expressing ChR2V. Scale, 50 μm .