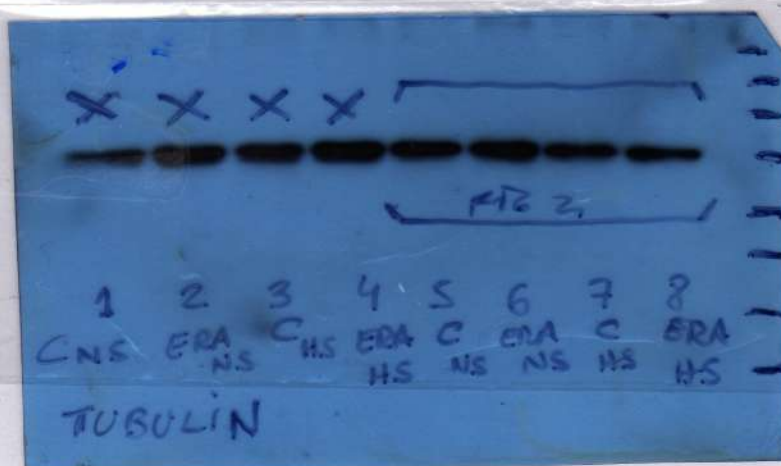


Fig 2: AQP2 protein expression



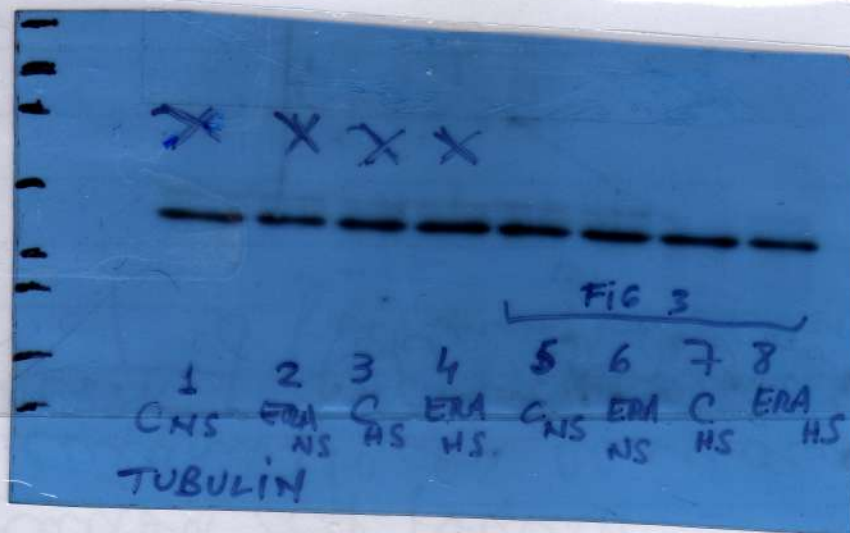
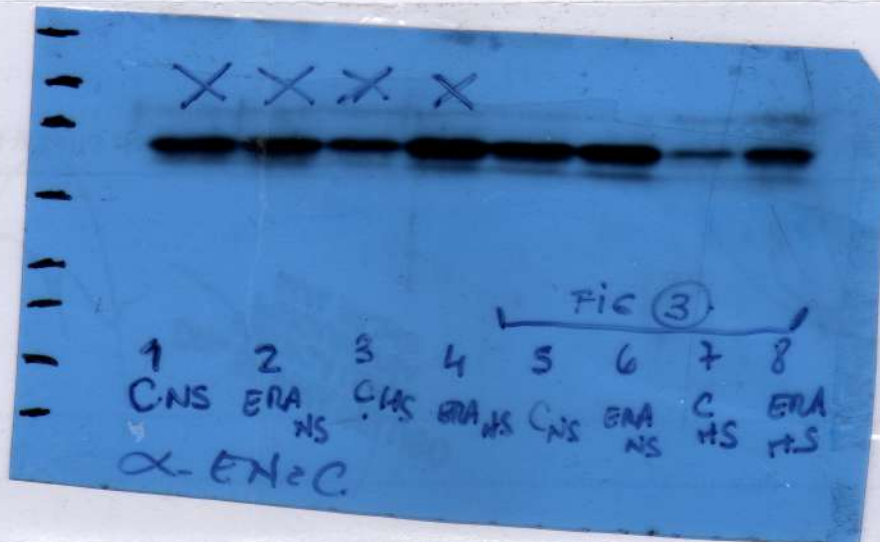
CNS: Control / normosodic diet

CHS: Control / high sodium diet

ERA_{NS}: endothelin receptor antagonist treatment / normosodic diet

ERA_{HS}: endothelin receptor antagonist treatment / high sodium diet

Fig 3- α -ENaC expression



CNS = Control / normosodic diet

CNS = Control / ~~norm~~ high sodium diet

ERANS = endothelin receptor antagonist treatment / normosodic diet

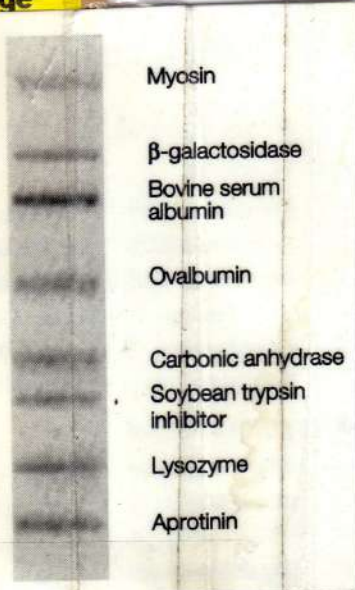
ERAHS = endothelin receptor antagonist treatment / high sodium diet

- Method used to capture the images of the slots
Epson stylus Cx5600 Scan

- Molecular weight markers:
(tris-cla gel)

BIO-RAD			Prestained SDS-PAGE Standards Broad Range	
Catalog 161-0318, Control 310010				
Protein	Calibrated MW (daltons) on 4-20% Tris-HCl gel	Calibrated MW (daltons) on 4-12% Bis-Tris gel		
Myosin	211,475	196,439		
β -Galactosidase	118,579	102,686		
BSA	78,995	57,161		
Ovalbumin	53,045	41,485		
Carbonic anhydrase	36,881	27,840		
Soybean trypsin inhibitor	28,643	20,613		
Lysozyme	17,809	15,044		
Aprotinin	6,435	6,445		

S 60
CL1610318 Rev D



Myosin
 β -galactosidase
Bovine serum albumin
Ovalbumin
Carbonic anhydrase
Soybean trypsin inhibitor
Lysozyme
Aprotinin